



Voluson SWIFT

*This Changes
Everything*

Voluson™

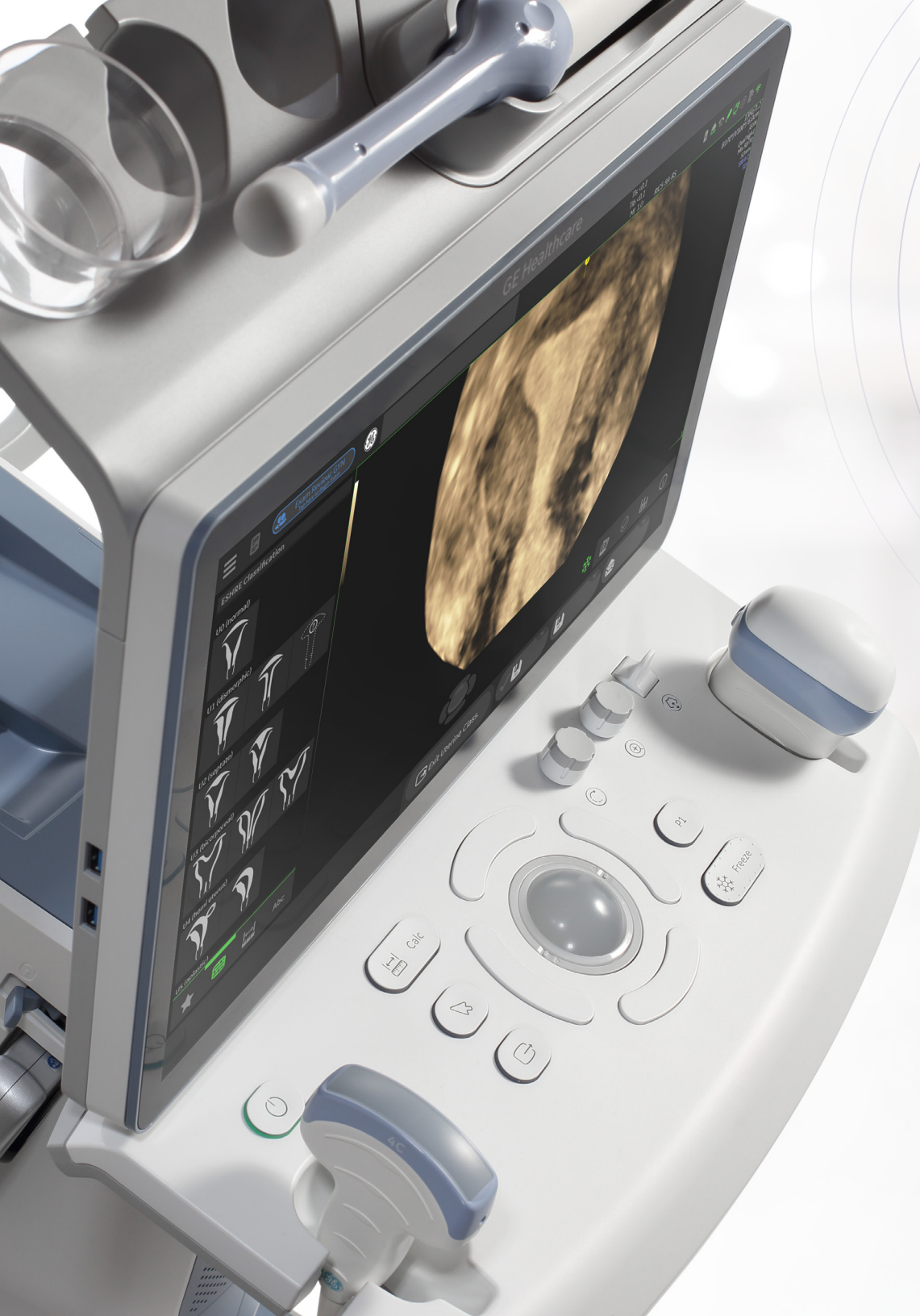
A Healthier Future for Women

gehealthcare.com



Scan for a welcome
message from our
Holographic Host





IT'S INTUITIVE. IT'S PERSONALIZED. IT'S TIME.

Welcome to a remarkably different ultrasound experience. Transform the way you work, with Voluson SWIFT from GE Healthcare.

Uniquely intuitive and customizable, we've reimagined the user experience – for a new level of ease and efficiency. Radically different in look and feel, the system is designed to simplify every interaction for seamless integration and maximum comfort. Feel like an experienced user from the beginning with artificial intelligence and automated tools that expand your capabilities and inspire confidence.

You asked for a better, more affordable way. The answer is simple.

This is Voluson SWIFT.
This changes everything.

This is **SIMPLICITY**

Tap. Swipe. Pinch. With touchscreen operation and a select group of most frequently used hard keys, the Voluson SWIFT ultrasound system is easy to learn because it incorporates the same intuitive functionalities as the devices we use every day.

- Capture exceptional images effortlessly
- Move from standard 2D views to rendered 3D planes in just a few simple steps

A simplified and optimized key layout, combined with common touch gestures provides intuitive operation.

With Uterine Trace, the system automatically extracts the coronal view in three simple steps – taking the effort out of 3D scanning.



This is **ADAPTABILITY**

With Voluson SWIFT, it is easy to reduce the daily distractions that can interfere with your true focus – your patients. Highly customizable, the system is designed to simplify every touch, every interaction. Make it yours by personalizing the menus, workflow settings, and individualizing user presets.



Designed for Comfort

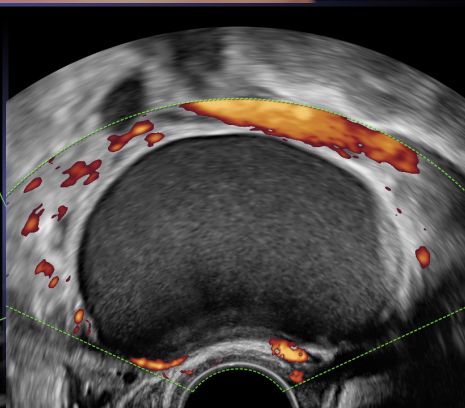
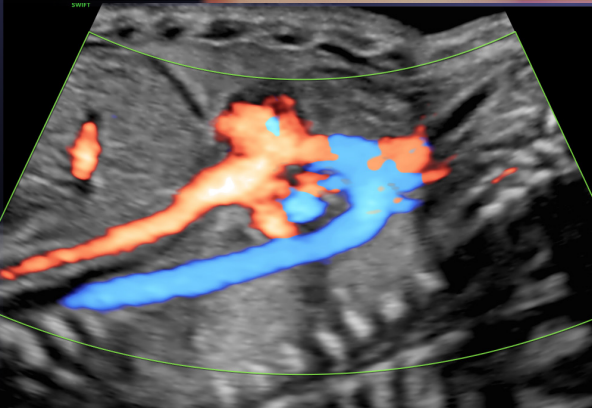
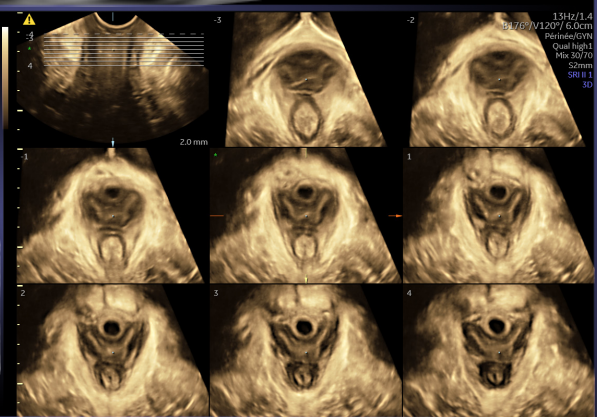
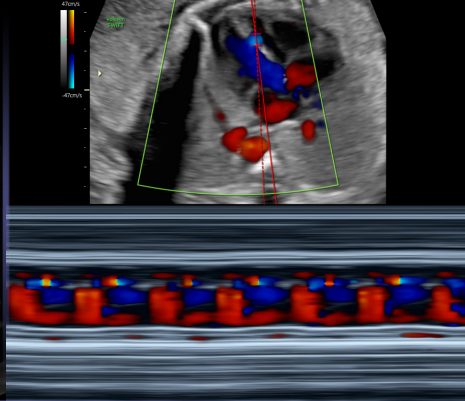
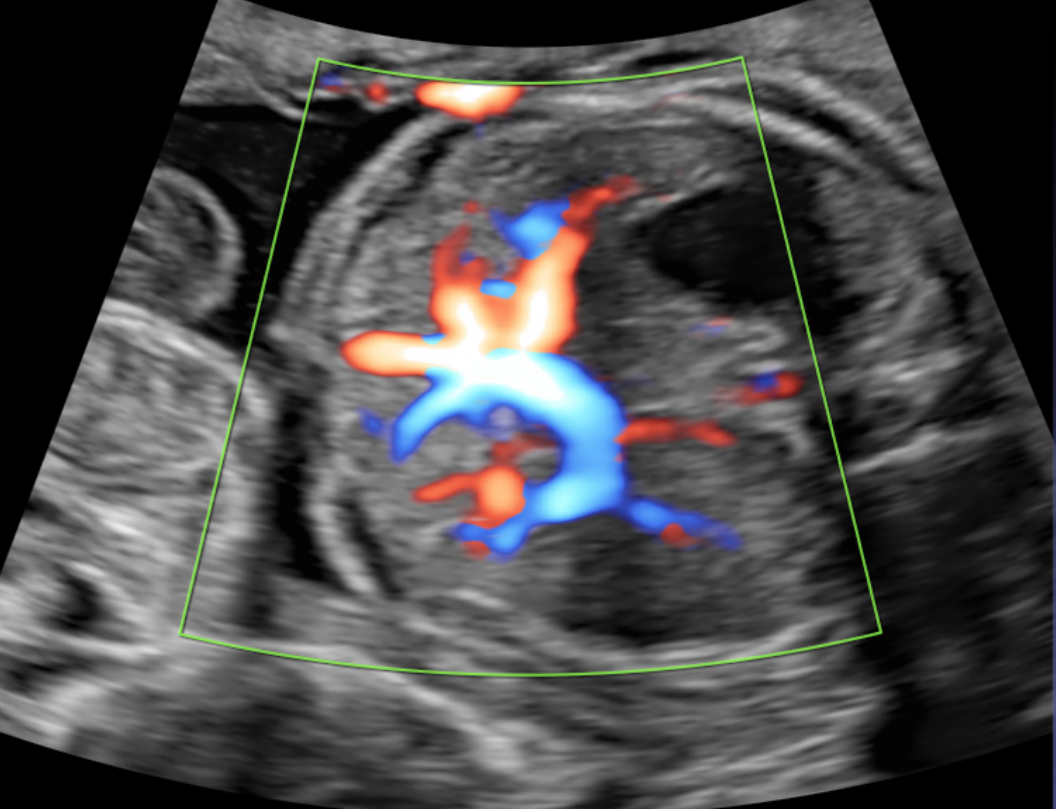
With advanced ergonomics and single place to interact, the system adapts to you and your preferences.

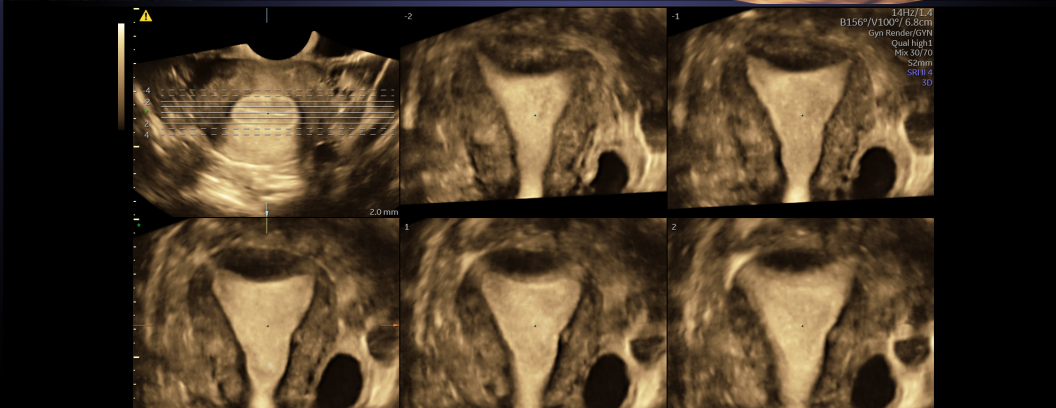
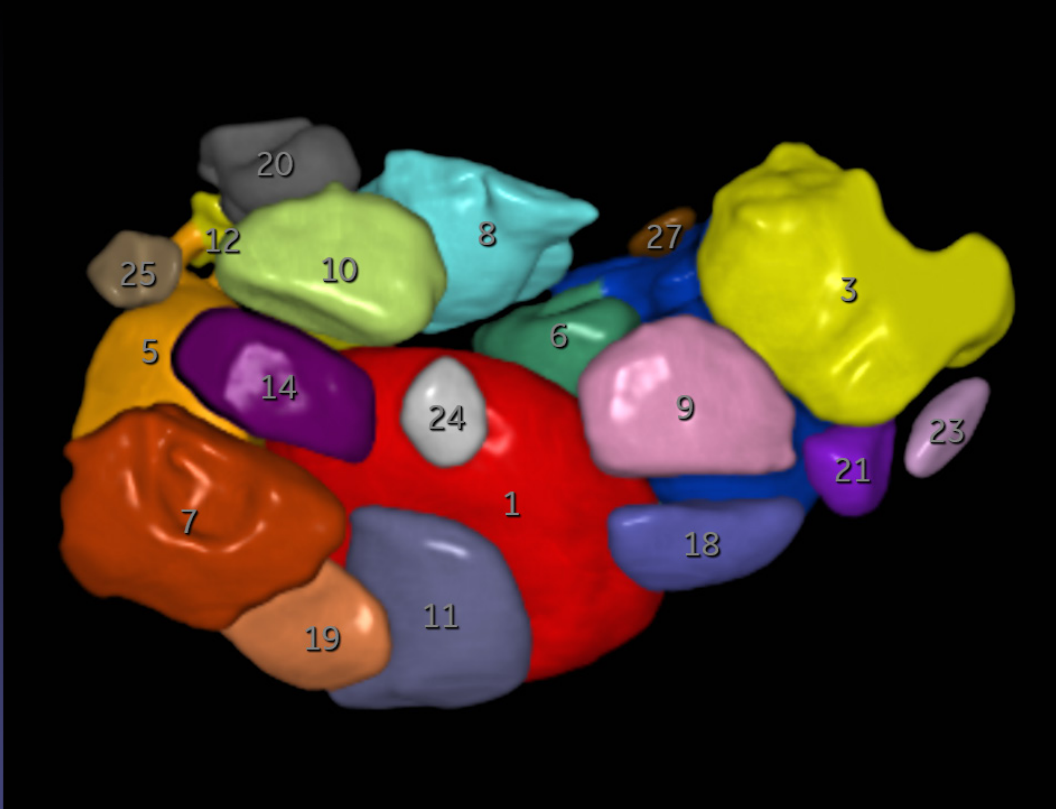
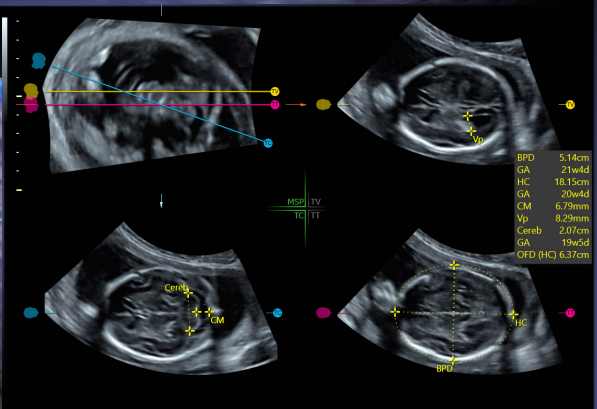
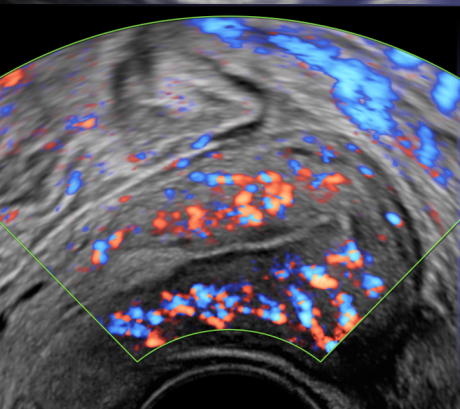
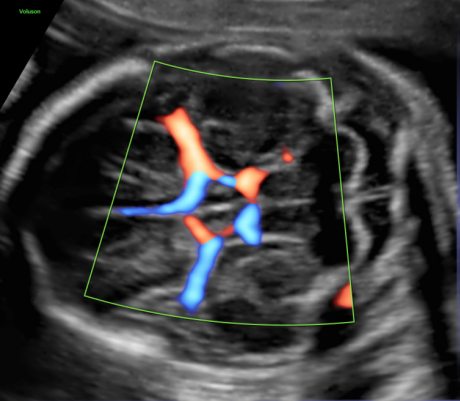
Personalized Packages

Enhance your performance with customized workflows and specialty applications designed to match your specific clinical focus and patient needs.

Want to learn more?
Request a Demo.





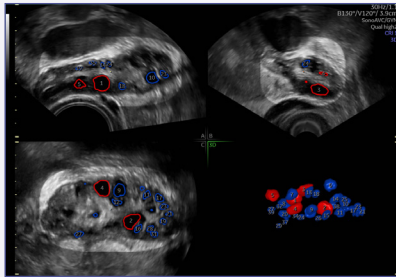


This is **EFFICIENCY**

Let's face it – you're busy. Voluson SWIFT is designed to help remove some of the obstacles that consistently slow you down. By leveraging the power of artificial intelligence, Voluson SWIFT allows you to save valuable time on acquisition, analysis, and reporting for both routine and detailed exams. Scan quickly and easily with SonoLyst[®], a suite of image recognition tools that automatically identify fetal anatomy seen on standard views.

Streamlining Everyday Workflow

Decrease exam complexity with easy-to-use automation tools, that can enhance your workflow while increasing consistency.



Improve the Clinical and Patient Experience

Tricefy[™] inside your Voluson enables easy connectivity for instant sharing with patients and colleagues and secure archiving. Connect on a new level with 3D Printing from the system.



With Voluson SWIFT, you are always ready to scan.

- Uninterrupted imaging with the rechargeable battery
- Cleaning is fast and simple with minimal hard keys, solid surfaces, and the large touchscreen
- Designed specifically to aid in disinfection

Guidance When You Need It

Step-by-step guidance, and streamlined reporting tools can improve efficiencies, while helping to reduce call backs.



*SonoLyst incorporates the AI technology of Intelligent Ultrasound

This is **HOW WE DEFINE VALUE**

When you buy an ultrasound system, you should expect more. More services. More support. And more partnership. Voluson SWIFT delivers with a technologically advanced platform that is built for the future.

- Count on rapid, responsive service to keep your ultrasound up and running at the highest level
- Remote support from our technical and clinical experts to help identify and resolve issues in real-time
- Expert tools to manage the health of your ultrasound system and transducers
- Advanced data analytics enable the ability to draw out key insights and operational opportunities for your practice

As a part of the Voluson family, enjoy membership in the Voluson Club, the only ultrasound community dedicated to the education and collaboration of women's health providers to help expand your expertise and your practice.



Security & Privacy

- SonoDefense multi-layer security designed for maximum protection
- Secure sharing of patient images and data
- User management easily manages system access across multiple users
- Stay up to date with Security Patches delivered directly to your system

Education & Community

- Access to education and training
- Learn about upcoming events
- Industry News
- Product information
- Voluson Club membership

The Value of
**BEING
CONNECTED**

Service & Support

- InSite Remote Support securely connects for convenient, real-time support with >30% remote resolution rate
- OnWatch proactive monitoring provides visibility & actionable data to accurately resolve issues faster
- Probe Assessment tool to easily and efficiently monitor your probe performance

Forward Thinking & Future Proof

- Flexible software driven user interface enables easy implementation of updates
- Access to upgrades and updates
- Operating System updates directly to your system to keep you current

This is **THE FUTURE OF WOMEN'S HEALTH.**
This is **Voluson SWIFT.**
This changes everything.



© 2020 General Electric Company – All rights reserved.

GE Healthcare reserves the right to make changes in specifications and features shown herein, or discontinue the product described at any time without notice or obligation. Contact your GE Healthcare representative for the most current information. GE, the GE Monogram and Voluson are trademarks of General Electric Company. GE Healthcare, a division of General Electric Company. Tricefy™ trademarks are registered trademarks of Trice Imaging, Inc. All other trademarks are the property of their respective holders. GE Medical Systems, Inc., doing business as GE Healthcare.

September 2020
JB83443XXt

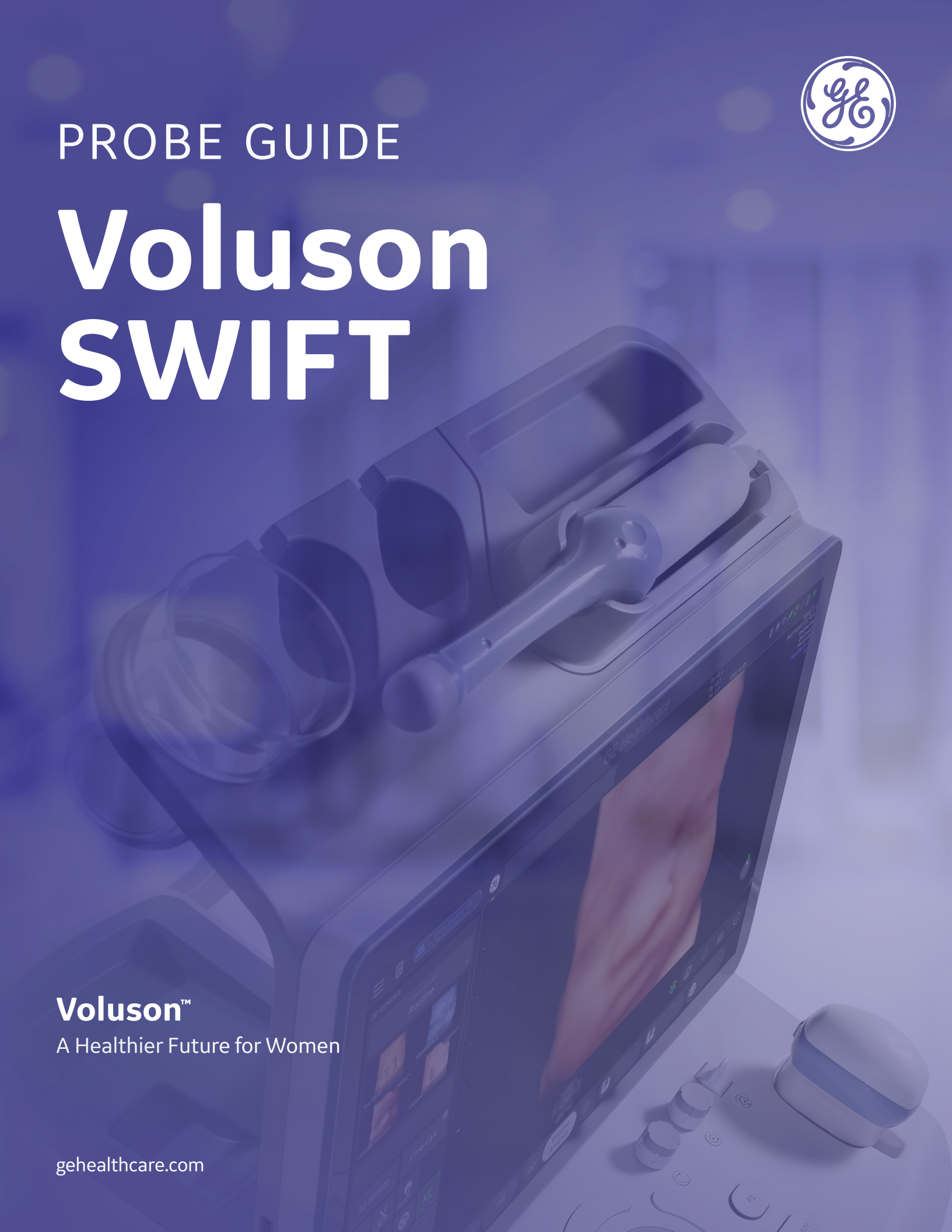








PROBE GUIDE




Voluson SWIFT

Voluson™
A Healthier Future for Women

gehealthcare.com



Description	Applications	Bandwidth	FOV
CURVED - 2D			
 <p>4C-RS H4000SR</p>	Abdomen, Obstetrics, Gynecology	2 – 5 MHz	81°
 <p>C1-5-RS H40462LA</p>	Abdomen, Obstetrics, Gynecology	2 – 5 MHz	114°
CURVED - REAL-TIME 4D			
 <p>RAB2-6-RS H48681WR</p>	Abdomen, Obstetrics, Gynecology	2 – 5 MHz	90° V 90° x 85°
 <p>RAB6-RS H48691LP</p>	Abdomen, Obstetrics, Gynecology, Pediatrics	2 – 8 MHz	90° V 90° x 85°
ENDOCAVITY - 2D			
 <p>IC9-RS H48691PJ</p>	Obstetrics, Gynecology, Transrectal	2.9 – 9.7 MHz	185°
 <p>IC9B-RS H48062AK</p>	Obstetrics, Gynecology, Transrectal	2.9 – 9.7 MHz	185°

	Description	Applications	Bandwidth	FOV
ENDOCAVITY - REAL-TIME 4D				
 RIC5-9A-RS H48701EJ	Wideband Microconvex Endocavitary Volume Probe	Obstetrics, Gynecology, Transrectal	3.8 - 9.3 MHz	184° V 184° x 120°
LINEAR - 2D				
 12L-RS H40402LY	Wideband Linear Probe	Small Parts, Peripheral Vascular, Pediatrics, Musculoskeletal, Breast	4 - 12 MHz	38.4 mm
PHASED ARRAY - 2D				
 3SC-RS H45041DL	Wideband Phased Array Probe	Abdominal, Obstetrics, Cardiology, Pediatrics, Cephalic	1 - 4 MHz	90°

For probe care and cleaning information, visit www.gehealthcare.com/transducers



© 2020 General Electric Company – All rights reserved.

GE Healthcare reserves the right to make changes in specifications and features shown herein, or discontinue the product described at any time without notice or obligation. Contact your GE Healthcare representative for the most current information. GE, the GE Monogram and Voluson are trademarks of General Electric Company. GE Healthcare, a division of General Electric Company. All other trademarks are the property of their respective holders. GE Medical Systems, Inc., doing business as GE Healthcare.

July 2020
JB83443XXad