



# Voluson Performance Series

IMAGING SIMPLIFIED

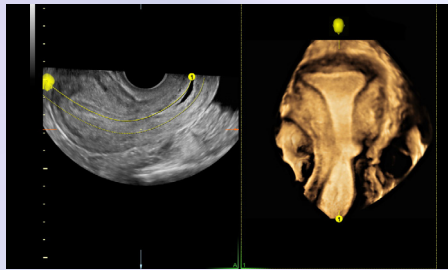
Ultrasound is an essential resource in providing quality women's healthcare. The Voluson™ P8 delivers excellent image quality, ease of use, and streamlined workflow in a sleek, lightweight package. Ideal for growing practices with demanding schedules, the P8 provides confident, efficient care across a range of applications including obstetrics, gynecology, assisted reproductive medicine, and labor & delivery. Its high performance, operational affordability, and exceptional reliability make the P8 a cost-effective way to join the Voluson family.

# The Value of Voluson Innovation

Advanced technologies for effortless imaging

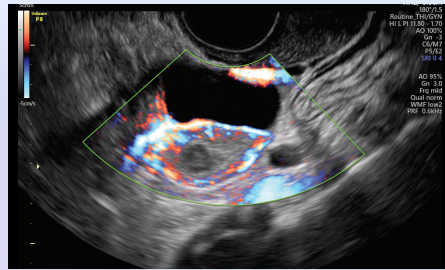
Simply place the probe to get the information you need, without time-consuming modifications. Built on Voluson Core Architecture, the Voluson P8 delivers excellent imaging across all types of patients, quickly and easily.

- Excellent **2D image clarity** and detail
- **3D/4D technologies** that expand clinical confidence
- Highly sensitive **Advanced Color Doppler** enables assessment of anatomy and fetal well-being
- **Exceptional penetration** for consistent imaging performance even in difficult to image patients



Simplify 3D with **OmniView** to obtain views not accessible with 2D, for another anatomical perspective and greater diagnostic confidence

Optimize your skills by accessing **educational content** directly on your ultrasound system



Display more anatomical information in a single image with **Wide-sector** abdominal and endocavitary probes

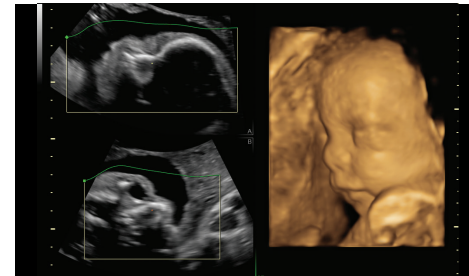
Explore **3D Printing** for rapid clinical prototyping, and to enhance parental bonding



# Inspiring Interactions

Eliminate barriers to enhance connections

Decrease complexity and increase exam consistency with Voluson's **Sono-Automation** technologies



**SonoRenderlive** – automates 3D/4D render line placement for easy volume rendering

Reduce keystrokes with **SonoBiometry** – Semi-automated biometry measurements (BPD, HC, AC, FL, HL, Vp, CM, Cereb)



Discover a sleek, lightweight system that fits into small spaces, enabling it to be used anywhere – battery operation provides 20 minutes of scan time and ~15 second rapid wake from sleep mode

# Leverage Our Entire Ecosystem

Harness the true power of Voluson by taking advantage of all we have to offer

Join **Voluson Club** – The only ultrasound community dedicated to the education and collaboration of women's health providers

**>36K**  
members



Protect sensitive data with Voluson ultrasound systems advanced security features including **Whitelisting** and **HD encryption**

Create structured reports (obstetrics and gynecology) in minutes and then export PDF reports with images and graphs at the touch of a button

**Tricefy™** inside your Voluson enables easy connectivity to securely archive, collaborate and instantly share images with patients

**Tricefy**



Count on responsive service and support from dedicated staff and programs that truly meet your Training, Maintenance, Repair, Remote Support needs and more



© GE, 2021

GE Healthcare reserves the right to make changes in specifications and features shown herein, or discontinue the product described at any time without notice or obligation. Contact your GE Healthcare representative for the most current information. GE, the GE Monogram and Voluson are trademarks of GE. Tricefy™ is a registered trademark of Trice Imaging, Inc. GE Healthcare, a division of GE. GE Medical Systems, Inc., doing business as GE Healthcare.

November 2021  
JB18175XX



# Voluson Performance Series








PROBE GUIDE

**Voluson™**

A Healthier Future for Women

[gehealthcare.com](http://gehealthcare.com)



	Description	Applications	Bandwidth	FOV
<b>CURVED - 2D</b>				
 4C-RS H4000SR	Wideband Convex Probe	Abdomen, Obstetrics, Gynecology	2 – 5 MHz	81°
<b>CURVED - REAL-TIME 4D</b>				
 RAB2-6-RS H48681WR	Wideband Convex Ultra-light Volume Probe	Abdomen, Obstetrics, Gynecology	2 – 5 MHz	90° V 90° x 85°
<b>ENDOCAVITY - 2D</b>				
 IC9-RS H48691PJ	Wideband Microconvex Endocavitary Probe	Obstetrics, Gynecology, Transrectal	2.9 – 9.7 MHz	185°
 IC9B-RS H48062AK	Wideband Microconvex Endocavitary Probe	Obstetrics, Gynecology, Transrectal	2.9 – 9.7 MHz	185°
<b>ENDOCAVITY - REAL-TIME 4D</b>				
 RIC5-9A-RS H48701EJ	Wideband Microconvex Endocavitary Volume Probe	Obstetrics, Gynecology, Transrectal	3.8 - 9.3 MHz	184° V 184° x 120°
<b>LINEAR - 2D</b>				
 12L-RS H40402LY	Wideband Linear Probe	Small Parts, Peripheral Vascular, Pediatrics, Musculoskeletal, Breast	4 – 12 MHz	38 mm
<b>PHASED ARRAY - 2D</b>				
 3SC-RS H45041DL	Wideband Phased Array Probe	Abdominal, Obstetrics, Cardiology, Pediatrics, Cephalic	1 – 4 MHz	90°

For probe care and cleaning information,  
visit [www.gehealthcare.com/transducers](http://www.gehealthcare.com/transducers).

© GE, 2021

GE Healthcare reserves the right to make changes in specifications and features shown herein, or discontinue the product described at any time without notice or obligation. Contact your GE Healthcare representative for the most current information. GE, the GE Monogram, and Voluson are trademarks of GE. GE Healthcare, a division of GE. GE Medical Systems, Inc., doing business as GE Healthcare.

October 2021  
JB17424XX

