

VOLUSON E10

THE EXCELLENCE YOU DEMAND
THE STANDARDS YOU SET

Your women's health practice is where complex cases are the rule, not the exception. Where patients demand your expertise, and trust you for answers. With the Voluson™ E10 you can deliver truly exceptional care – confidently and efficiently – every time – keeping you at the forefront of women's health care. Powered by the Radiance System Architecture, the Voluson E10 encompasses the fastest, most advanced imaging capabilities combined with efficiency and security features to help you to provide confident patient answers, faster.

BT21



LEADING THE WAY – SETTING THE STANDARDS

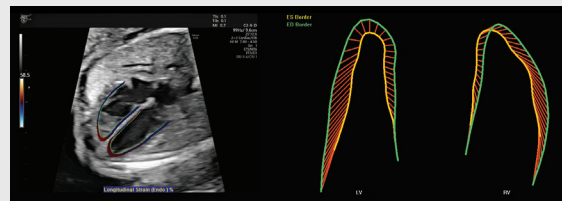
Unrivaled imaging for your most complex cases

Display extraordinary image detail and gain workflow through Voluson's **Radiance System Architecture**. Updated with the latest hardware/software, its sophisticated beamformation generates spectacular 2D and 3D/4D images with increased penetration and clarity, while transferring 6x more data* for higher resolution and extremely fast frame rates. Doubling the processing power* drives advanced applications and efficiency.



Achieve brilliant resolution and volume rates up to 29 times higher than those with mechanical probe technology with a curved matrix electronic 4D probe. The **eM6C** delivers ultra-fast volume rates, flexible imaging formats, and excellent resolution in routine exams to complex fetal echocardiography

fetalHQ – Conduct an easy and comprehensive evaluation of the size, shape and contractility of the fetal heart from the 4-chamber view using measurements based on 2D imaging and speckle tracking. **fetalHQ** contains an in-depth report page including Z-scores and percentiles for each of the cardiac measurements. New AutoFlip and Quiver features help simplify the fetal heart orientation and border identification respectively

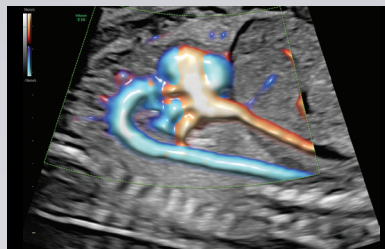


Achieve exceptional tissue and detail resolution with **XDclear™ probe technology C2-9, C1-6, and the new RM7C** – The combination of single crystal, acoustic amplification, and cool stack technology offers extraordinary 2D, 3D and 4D imaging even with difficult to scan patients

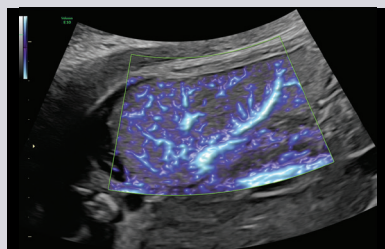


Providing you the ability to confidently explore fetal images in the earliest stages – The **high resolution 4D transducer (RIC 6-12-D)** helps you detect the finest details in the first trimester

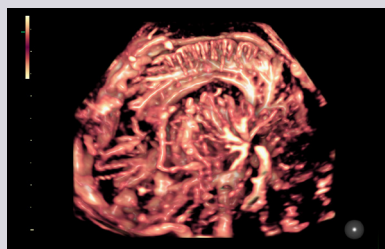
*Versus RSA in Voluson Expert Series BT15



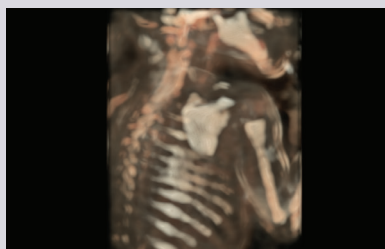
Achieve a new standard of color Doppler – **Radiantflow™** delivers easy, fast visualization of blood flow using the amplitude of the Color Doppler signal to enhance the robustness and create a 3D-like appearance



Expand the range of visible blood flow to include low velocities with **SlowflowHD** to visualize blood perfusion



Observe low velocity vessels in 3D images with **Slowflow3D** – extending color capabilities for first trimester, placenta, kidney and gynecology for enhanced diagnostics



Easily obtain volume images with unprecedented depth and clarity using the **HDlive™** technology suite – An essential problem solving tool for a deeper understanding of relational anatomy and developing structures

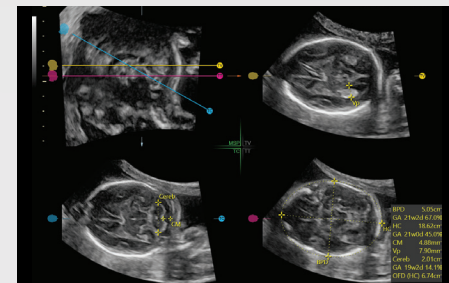


Elevate tissue differentiation, border definition and fine resolution with **HDRes**, delivering exceptional 2D imaging performance

THE TRUST PATIENTS NEED. THE FOCUS YOU DESERVE.

Tools that empower your very best care

Decrease complexity and increase exam consistency with Voluson's **Sono-automation** technologies



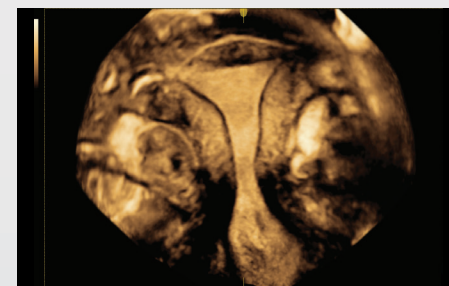
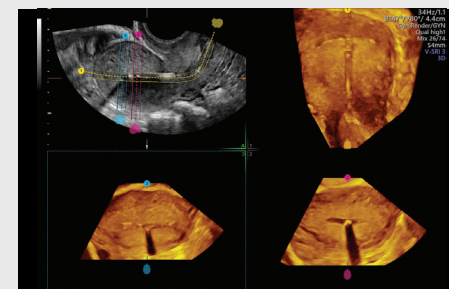
SonoCNS – An Edison application using deep learning technology to help properly align and display recommended views and measurements of the fetal brain. Now 29% faster than previous version**



SonoNT™/SonoIT – (Sonography-based Nuchal/Intracranial Translucency) – Semi-automatic, standardized measurements of nuchal and intracranial translucency

Advanced VCI with OmniView

Streamline your volume imaging by obtaining any plane from a 3D or 4D volume by simply drawing a line, curve, poly-line or trace. Further enhance image with adjustable slice thickness for improved contrast resolution



Taking the effort out of 3D with **Uterine Trace** – In 3 simple steps, obtain the coronal plane of the uterus. Links directly to Uterine Classification pictograms for easy documentation of uterine shape

Balance schedules while increasing patient satisfaction with **Scan Assistant**. This flexible, customizable exam protocol tool helps increase exam consistency and productivity while documenting for quality assurance purposes

Ovarian cancer risk estimate based on **IOTA (International Ovarian Tumor Analysis) Simple Rules**, IOTA LR2, and IOTA ADNEX



ViewPoint™ 6 is a dedicated ultrasound reporting and image management solution with enhanced features to help improve workflow

Tricefy™ inside – Unique cloud based solution to share, collaborate and archive ultrasound images and reports securely with colleagues and patients directly from your Voluson



4DView software by GE Healthcare allows you to optimize, manipulate and analyze volume ultrasound data offline – when and where you need it



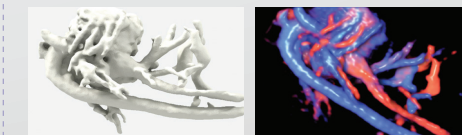
Maximize comfort and workflow with a modern ergonomic design – experience **xTouch** – Intuitive volume navigation for 3D manipulations including X/Y/Z rotations, zoom, MagiCut, HDlive light sources, OmniView and more

Evaluate risk and assign classification of the endometrial lining based on **IETA (International Endometrial Tumor Analysis)** and **IDEA (International Deep Endometriosis Analysis)** – IDEA assessment tool helps step through protocol for comprehensive evaluation

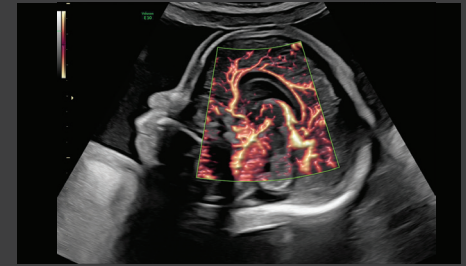
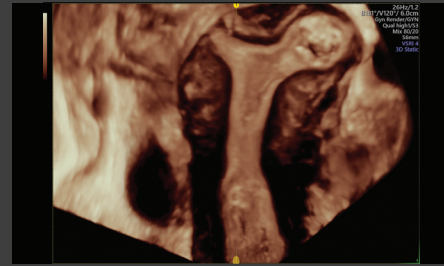
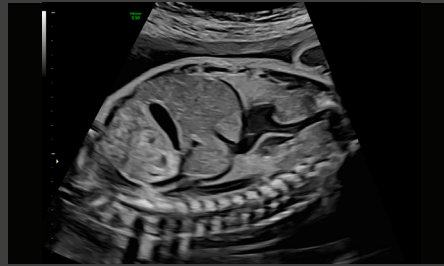
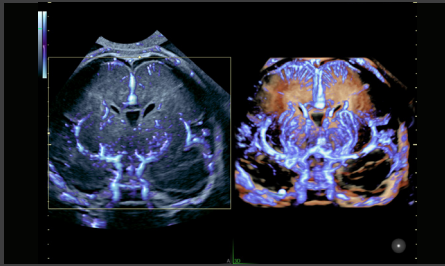
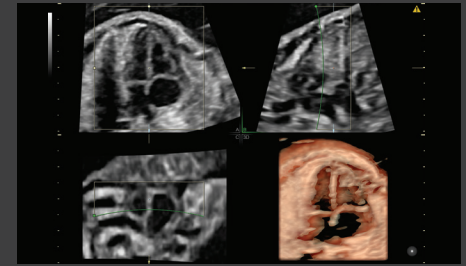
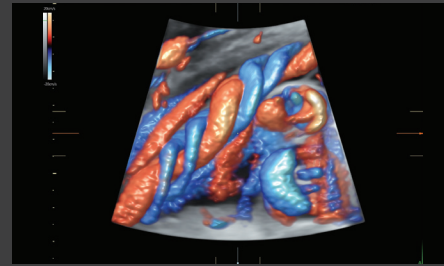
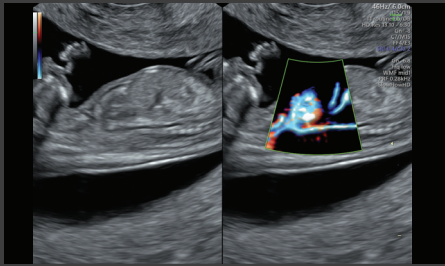
BT21 updated with the latest **Windows® 10** software, HD Encryption and whitelisting for enhanced security. USB port deactivation and a 2TB HDD



Explore **3D Printing** for rapid clinical prototyping, research, and parent bonding. Export files directly from the Voluson ultrasound system to instantly 3D print projected and full mesh data sets. Downloading directly helps save time and reduces complexity versus using external post processing software



**Compared to BT19 version



LIKE FAMILY – WE'RE HERE FOR YOU

Exclusive offerings to enhance your expertise

>32K
members

Join **VolusonClub** – The only ultrasound community dedicated to the education and collaboration of women's health providers – Benefits include: Product educational videos, product tips and tricks, white papers, Voluson educational courses and much more



A well maintained Voluson system improves your efficiency and helps you to deliver the best patient care. That's why we designed Voluson Ultrasound Systems with InSite™ connectivity, enabling OnWatch proactive diagnostics and remote software updates so you can receive OS patches and Security updates. Combined with flexible service and financing programs, GE can partner with you to monitor and maintain your systems to ensure quality and compliance

Voluson Ultrasound Cleaning and Disinfection –

For more detailed information visit VolusonClub, www.gehealthcare.com/ultrasound or scan the QR code



© 2020 General Electric Company – All rights reserved.

GE Healthcare reserves the right to make changes in specifications and features shown herein, or discontinue the product described at any time without notice or obligation. Contact your GE Healthcare representative for the most current information. GE, the GE Monogram, Voluson, SonoNT, HD*live*, XDClear, Radiant*flow*, SonoVCAD, ViewPoint and InSite are trademarks of General Electric Company. Tricefy™ trademarks are registered trademarks of Trice Imaging, Inc. Windows is a registered trademark of Microsoft Corporation. GE Healthcare, a division of General Electric Company. GE Medical Systems, Inc., doing business as GE Healthcare.

September 2020
JB83610XXq