

Vivid iq Ultra Edition



You've got places to go.

This sleek, ultra portable system enables you to take exceptional 2D and 4D image quality where you need it. Also on-board are advanced echo quantification tools and automated workflow to streamline scanning. The Vivid iq Ultra Edition is your perfect companion around the hospital, the medical offices or into the community.

Great things do come in small packages.

Extreme Productivity

Intuitive and as easy-to-use as your personal devices, the updated user interface on the Vivid iq Ultra Edition helps make scanning straightforward and fast. Tools that harness the power of AI help reduce exam times and also reduce up to 80% of keystrokes. These reductions not only save time, but help diminish fatigue and inter-observer variability. Clean up time is also minimized due to the sealed operating panel which helps you quickly move onto your next exam.



Best-in-Class Ergonomic Design

The improved ergonomic design is based on extensive user feedback and validation. The combination of the full touch screen control with new trackpad swipe and click gestures allow you to maintain support for your hand as you rest on a new ergonomic wrist rest. Scanning in comfort allows you to focus your attention on the image area.

Additional ergonomic features for your comfort include an adjustable monitor to customize viewing and typing angles, and a height-adjustable cart for comfortable scanning whether seated or standing.

Clinical Versatility

Standard, Premium, 4D, and Point of Care versions are available, offering from basic 2D echo imaging to advanced 2D and 4D capabilities for quantifying heart and valve function, as well as ICE imaging and integrated connectivity for EP Lab. At the same time, diverse imaging presets and quantification tools for vascular and lung assessments are included, as well as a wide range of additional applications and presets.

Ultra Portability and Flexibility

Designed to go places, the Vivid iq Ultra Edition is lightweight and has up to 4 hours of battery scan time on the cart.⁵

Even on the go, images can be processed anytime with the GE Healthcare Raw Data technology format. Once your scan is complete, share images quickly and safely between operators and readers with Wi-Fi connectivity and the Streaming Server feature.

15.6" ultra-high-resolution, wide format, color screen

Multi-touch LCD technology allowing double-click, pinch-to-zoom, and swipe to adjust and browse

Ergonomic transport push handle

Multi-probe box (optional) with 3 RS-probe ports and one DLP-probe port to support 6VT-D probe

Assorted cable management hooks

Convenient foot pedal height adjustment control

Ultra lightweight (11.5lb./5.2 Kg.)

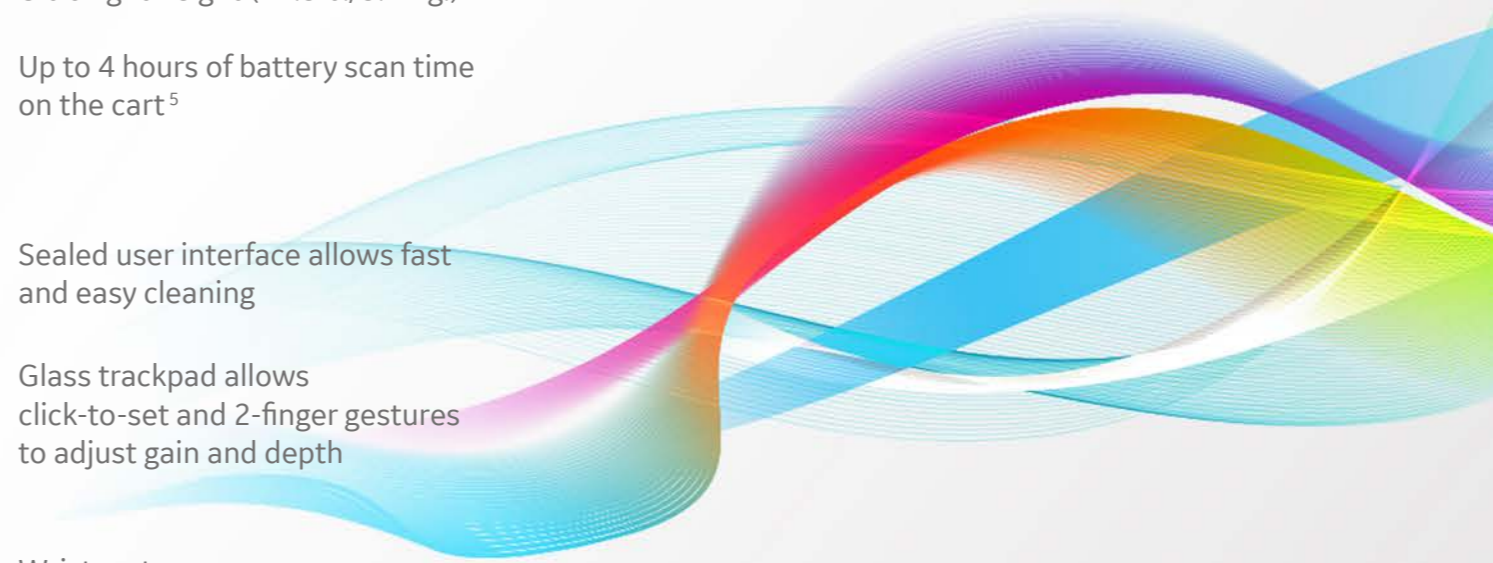
Up to 4 hours of battery scan time on the cart⁵

Sealed user interface allows fast and easy cleaning

Glass trackpad allows click-to-set and 2-finger gestures to adjust gain and depth

Wrist rest accessory

Removeable and cleanable storage bin



MODERN ERGONOMICS

Sleek design with an intuitive user interface.

▲ **90%**

of sonographers experience symptoms of Work Related Musculoskeletal Disorders (WRMSD)¹

\$120+

billion yearly direct and indirect costs for employers¹

USER EXPERIENCE EXCELLENCE

Your well being is our top priority

Prolonged scanning poses a known risk for work related musculoskeletal disorders (WRMSDs). Staff wellness is a key asset to your organization. Shorter exams, an intuitive user interface and adoption of an ergonomic body posture can positively impact your staff wellness. These are all possible with the Vivid iq Ultra Edition.

A new level of user experience

The updated touch user interface was designed for convenience and fast scanning, for both left and right-hand users, minimizing muscle strain and helps sustain eye contact with the image area.

The new trackpad functionality and ergonomic wrist-rest accessory enable fast scanning and much needed ergonomic support.



Do more on the trackpad



Minimize cognitive fatigue



Intuitive and familiar user interface

**Your time is precious.
Save it.**

DETECTABILITY⁶
 **98%**

AI AFI LV with AI View Recognition

Fully automatic recognition of the apical imaging views and measurements of GLS and segmental longitudinal Strain for LV.

POWERED BY AI

Improve diagnostic speed and accuracy

Vivid *iq* Ultra Edition features the latest AI-based technology to help reduce tedious tasks and improve workflow efficiency. You can diagnose more confidently and accelerate exams via automated (AI-driven) Cardiac Doppler and 2D LV measurements.

The results are impressive. Exam time is reduced, and operator fatigue minimized with up to 80% less clicks to get 2D measurements, and inter-observer variability diminished.⁶

Discover the many innovations brought by the Vivid *iq* Ultra Edition, and more importantly, how these can contribute to make clinical practice - Elevated by You.

Ultra Fast.
Ultra Precise.
Ultra Efficient.



AI Cardiac Auto Doppler with AI

**REDUCED TIME
PER MEASUREMENT**

 **UP TO
93%**

Fewer Keystrokes⁷

**LOWER INTER
OPERATOR VARIABILITY**

REDUCE VARIABILITY

 **~3x**

Standardized exams with
greater reproducibility⁷

**ACCELERATED
WORKFLOW**



Productivity improvement

CLINICAL EXCELLENCE for the Echo Lab

POWERED BY AI ELEVATED BY YOU

At GE Healthcare we strive to empower you by reducing wasted time and effort. We aim to remove tedious tasks and help make every moment count for your patients.



LESS CLICKS, UP TO ⁶
-80%

AI AI Auto Measure 2D

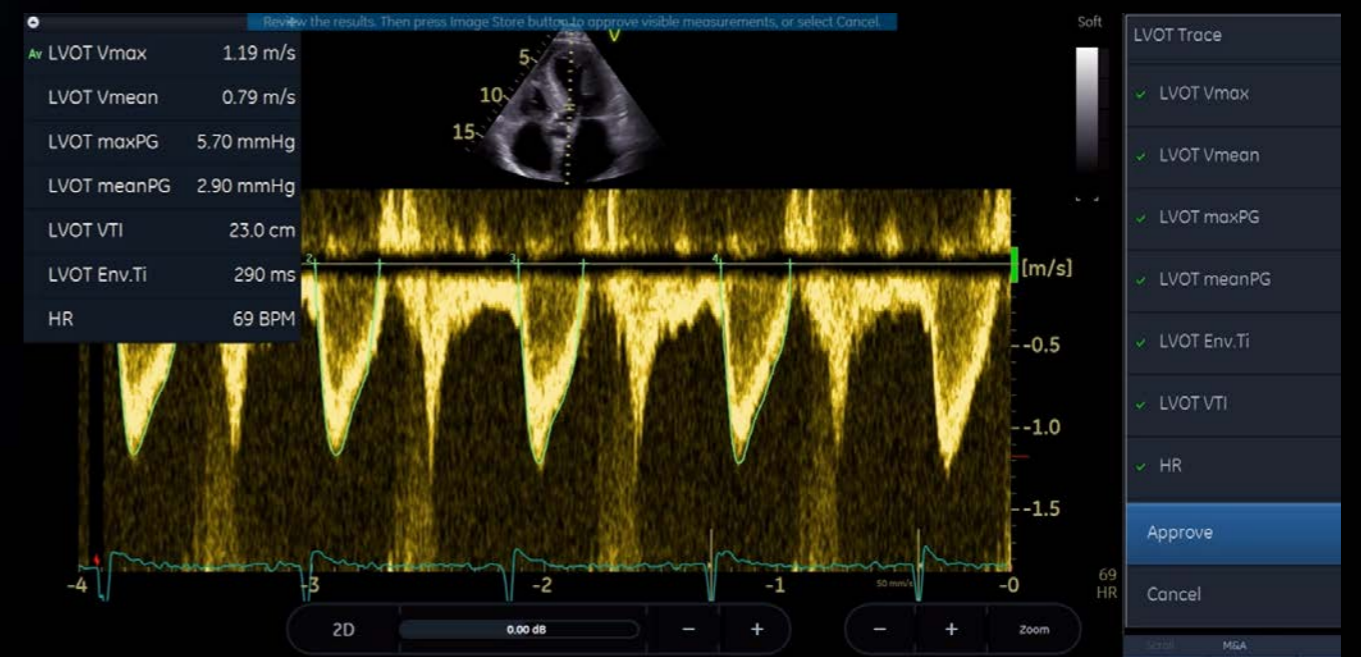
With the power of AI, the manual caliper measurements can be completed with 3 clicks: **Freeze - Measure - Auto**. A full set of reproducible measurements will instantly appear on the screen.



ACCURACY ⁶
98%

AI AI Auto Measure Spectrum Recognition

With the power of AI, a wide range of Doppler measurements can be completed with 2 clicks: **Freeze - Measure**. A Doppler trace and full set of associated measurements will instantly appear on the screen.





Pediatric imaging

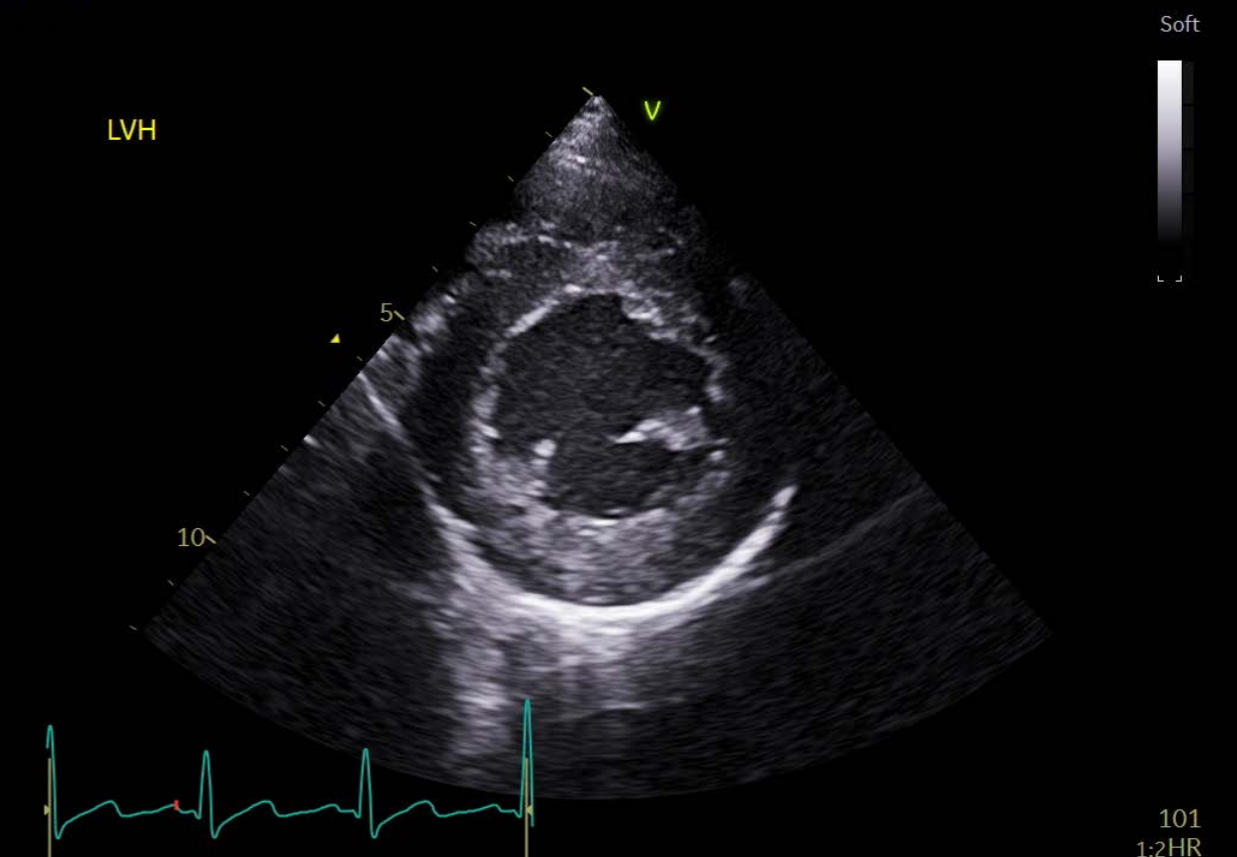
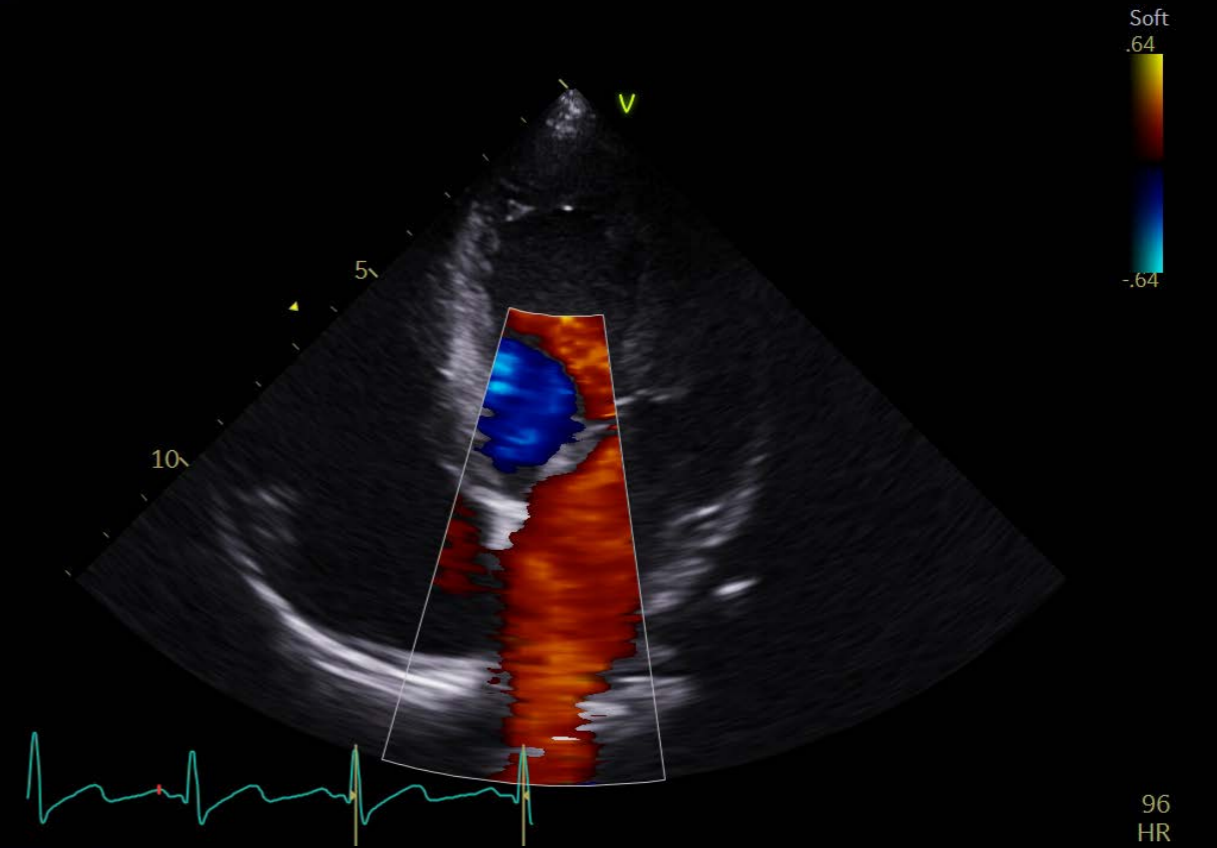
Visualize small anatomies with speed, clarity and confidence thanks to Vivid iq Ultra Edition's superb high-resolution imaging and dedicated pediatric probes.

SPEED AND VERSATILITY

for Pediatrics

Speed and versatility are needed for your pediatric echo exams.

The Vivid iq Ultra Edition delivers high image quality with dedicated presets and advanced quantification tools, enabling precise measurements for all your patients - big or small.





Designed for **BEDSIDE ASSESSMENT**

Use the Vivid iq Ultra Edition to assess heart and lung functionality in COVID-19 patients.

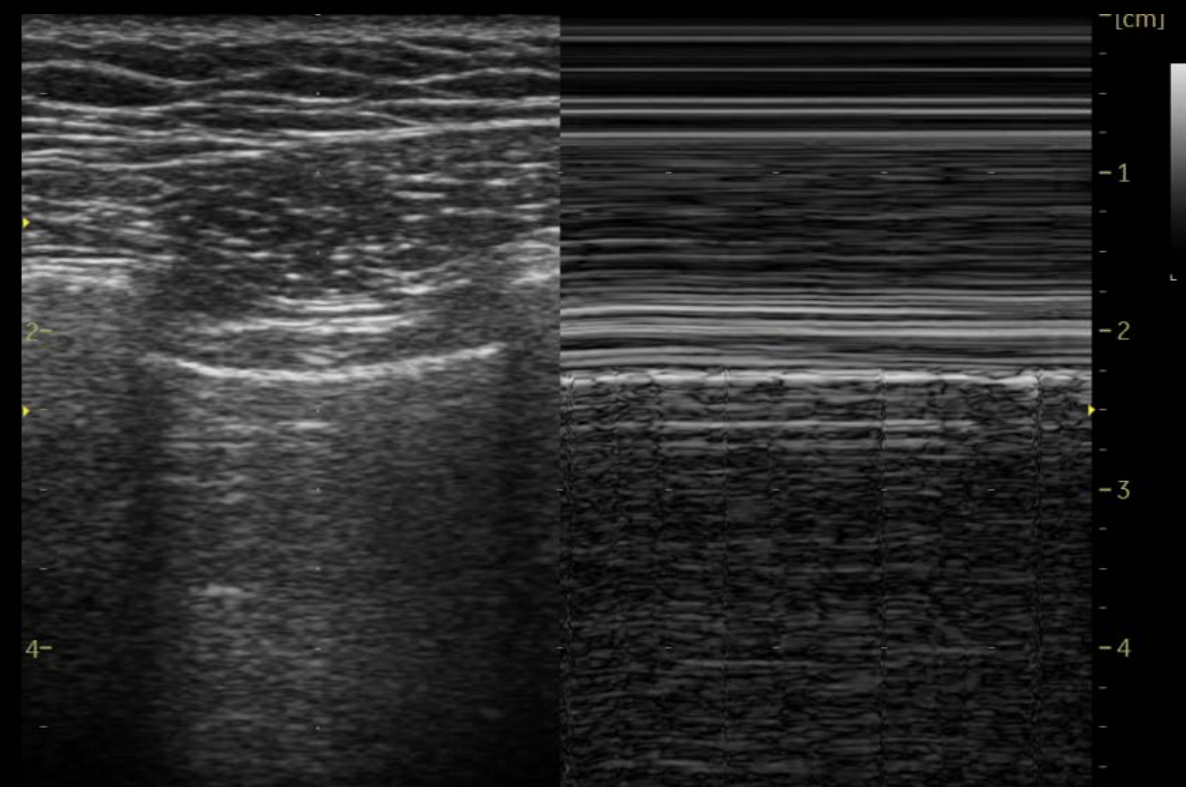
There are times when the best decision is to scan at the bedside to minimize risks. In addition to needing a portable system that is lightweight, battery powered, Wi-Fi enabled and easily cleanable, your demand for advanced imaging remains the same as in the Echo Lab. High-end performance for portable cardiac assessments is truly possible with the Vivid iq Ultra Edition.

With uncompromised heart visualization and excellent quantification tools, you'll save precious time with the GE Vivid AFI LV with AI-based View Recognition, and Auto EF for rapid LV Strain assessment. AI-powered measurements and tracing tools are easy to use, even by non-specialized users.

Use the new AFI RV tool to assess RV systolic function and estimate disease prognosis.

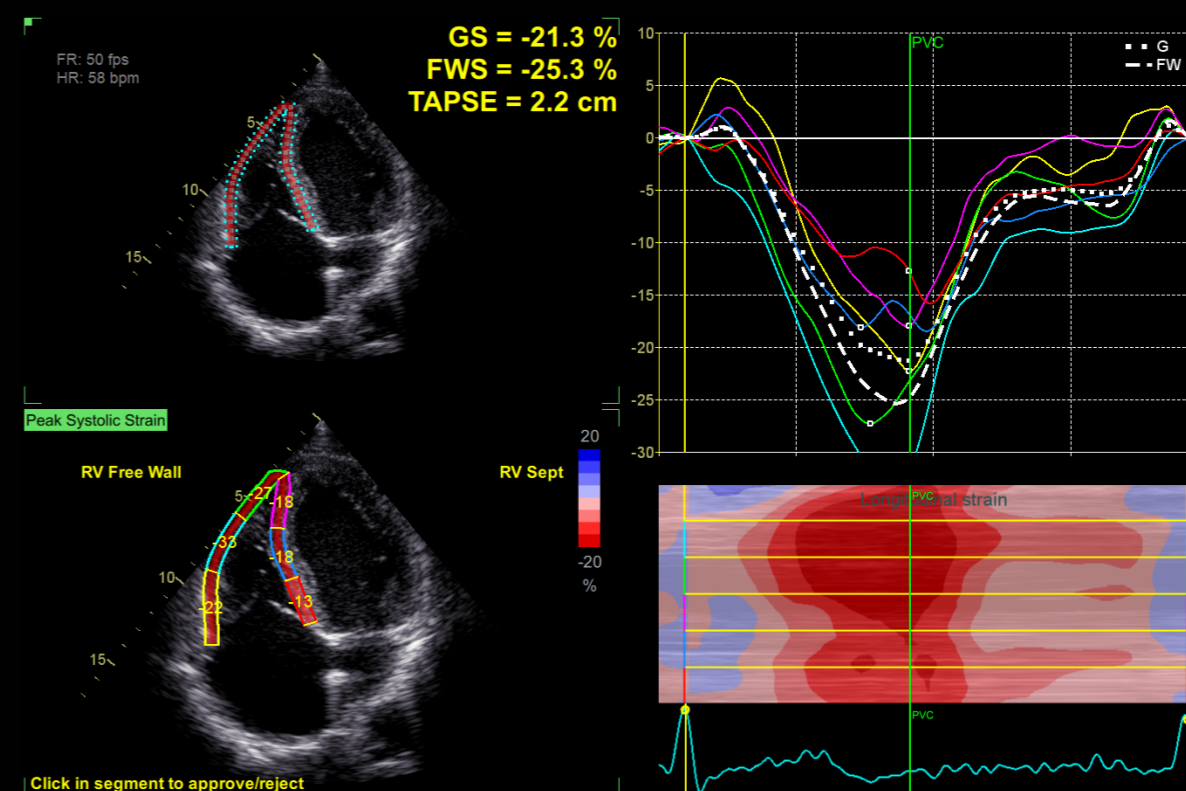
Lung Assessment

Bedside lung assessment is made easier with dedicated FAST and lung presets that help to quickly optimize images.



AFI RV

Right Ventricle Global Strain (RVGLS) is an objective and accurate marker that is strongly correlated with RV ejection fraction. It has good prognostic power in many clinical studies.⁸





CLINICAL EXCELLENCE

beyond Cardiology

The demand for multi-purpose, cost efficient ultrasound systems with uncompromised image quality is growing. Your portable Vivid iq Ultra Edition will exceed your expectations across a wide range of applications.

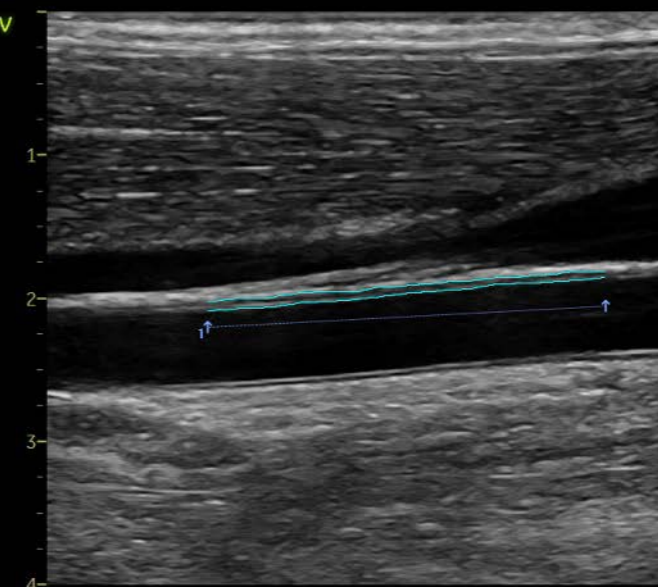
With the aging population, vascular and abdominal exams are increasingly challenging. Vivid iq Ultra Edition provides you exceptional 2D and color flow imaging across applications including vascular, abdominal, fetal/obstetrics, and other applications beyond cardiology.

Efficient workflow, flexible touch screen display options (up/down, left/right), wide probe range and quantification tools ensure the confidence you need for speedy and accurate diagnosis also under challenging conditions.

Vascular quantification

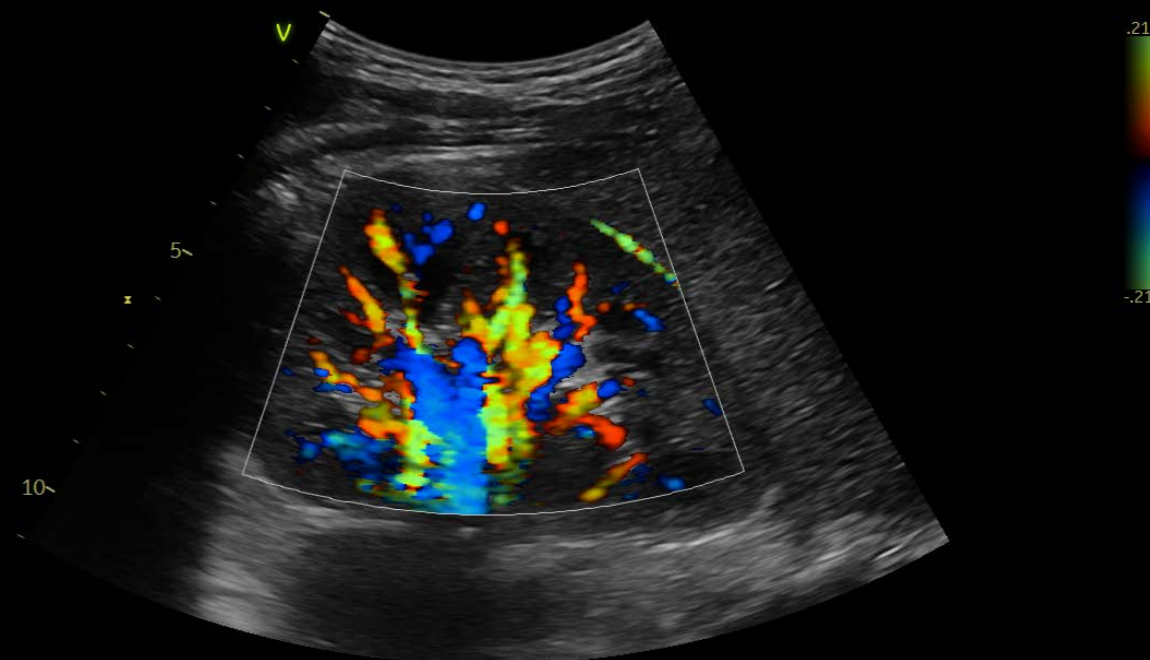
Develop fast and complete quantitative assessment of vascular anatomies, such as the Intima Media Thickness, with dedicated vascular measurement tools.

d	0.12 cm
IMT A Avg	0.59 mm
IMT A Max	0.76 mm
IMT A Min	0.40 mm
IMT A SD	0.08 mm
IMT A Pts	694



Abdomen diagnosis

Visualize tissues and flow patterns with greater details thanks to Vivid iq Ultra Edition's high-resolution imaging.



CLINICAL EXCELLENCE

for Interventional Procedures

When minimal footprint and infection control are critical, your heart team will appreciate a portable solution.

While intracardiac echo (ICE) is a dynamic and growing space, procedure rooms may be small and overcrowded, and infection control a constant struggle.

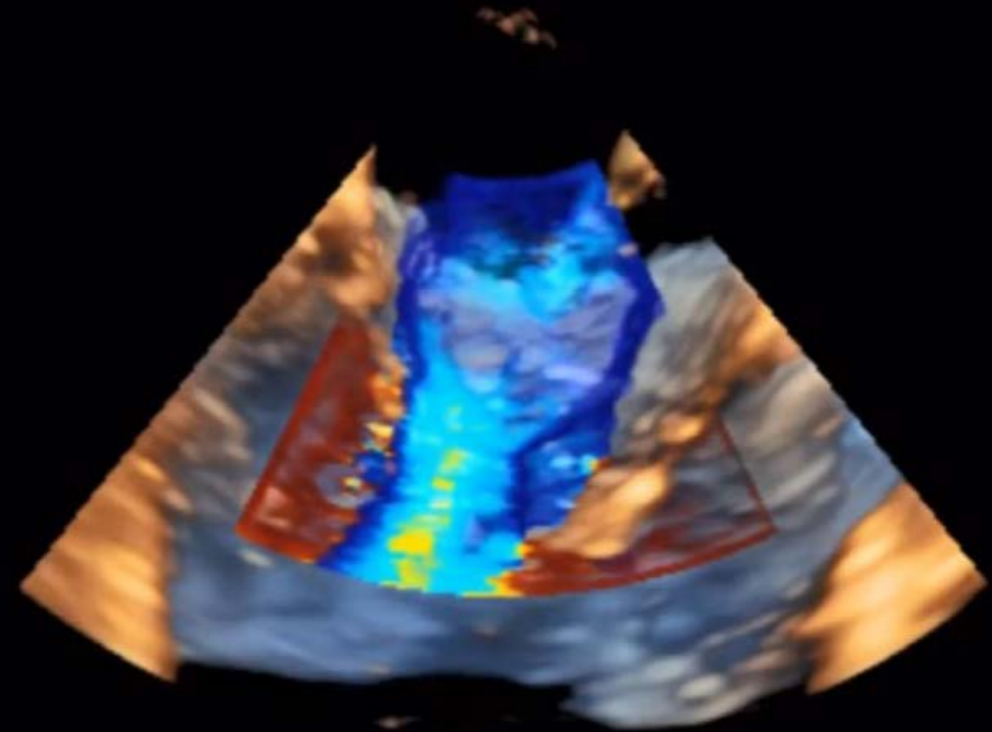
With the Vivid *iq* Ultra Edition minimal footprint, you can overcome your space constraints, while easily navigating imaging via the trackpad and touch screen, with your gloves on.

HD Color adds precision and insight to your everyday 4D TEE pre-operative screening and diagnostic procedures.

Expect more from your portable ultrasound and benefit from the Vivid family advanced multi-plane and 4D visualization and navigation tools.

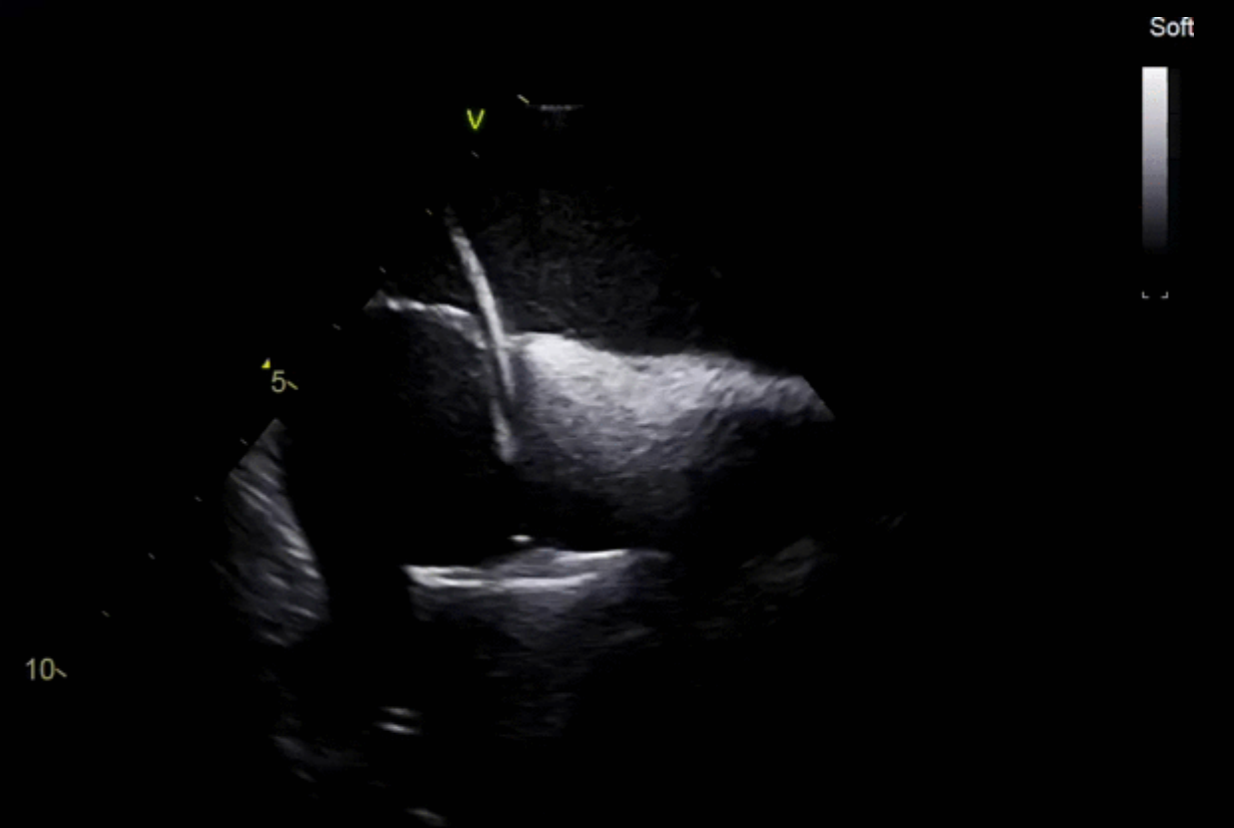
HD Color

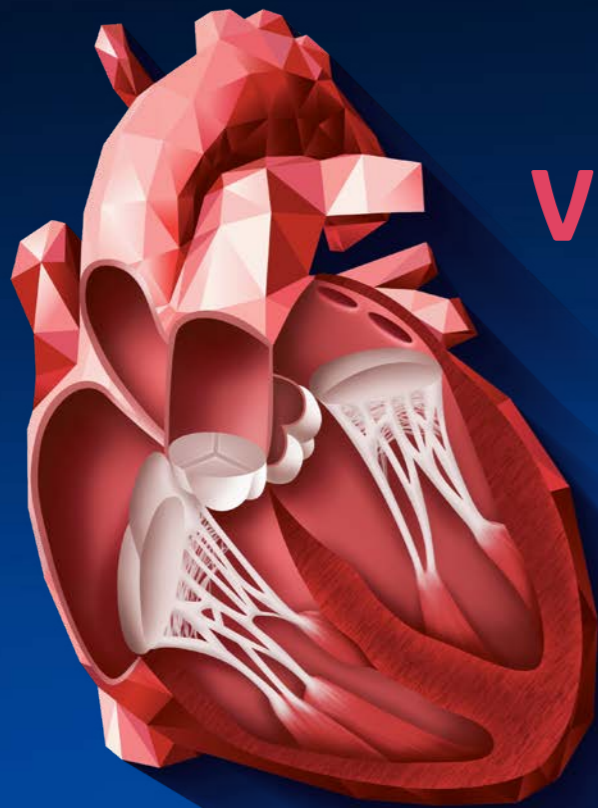
4D color flow rendering technique for semi-transparent visualization of origin and size of high velocity jets.



2D ICE

Great image quality, with easy and intuitive Intracardiac echo (ICE) touch user interface for your 2D ultrasound-guided ablation and structural heart procedures.





VIVID HEART APPLICATIONS

A wide range of clinical applications for use in Echo Lab, in the ICU and NICU, in the EP Lab and Cath Lab, and in Cardiovascular practices.

VISUALIZATION AND NAVIGATION

Ultra Edition

4D Markers

FlexiSlice

HD Color

FlexiViews

View-X

Scan Coach

FLOW QUANTIFICATION

Ultra Edition

Cardiac Auto Doppler

AI

AI Auto Measure Spectrum Recognition

AI

VALVES AND CHAMBERS QUANTIFICATION

Ultra Edition

4D Auto AVQ

4D Auto MVQ

4D Auto LVQ

AI Auto Measure 2D

AI

Auto EF

AI

AFI FUNCTIONAL IMAGING

Ultra Edition

AFI LV with AI View Recognition

AI

AFI RV

AFI LA



VIVID HEART APPLICATIONS

VISUALIZATION AND NAVIGATION

New in Ultra Edition

Why guess? When you can see.



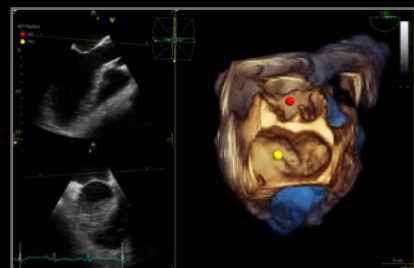
FlexiSlice

With a distance gauge and two viewing layouts, this interactive tool for obtaining 2D or render views in live or replay mode may provide enhanced insight as well as save time.



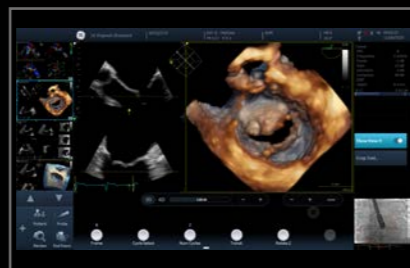
FlexiViews

Gain quick access to predefined 4D/multiplane views during live mode, potentially reducing scan time during complex interventional procedures.



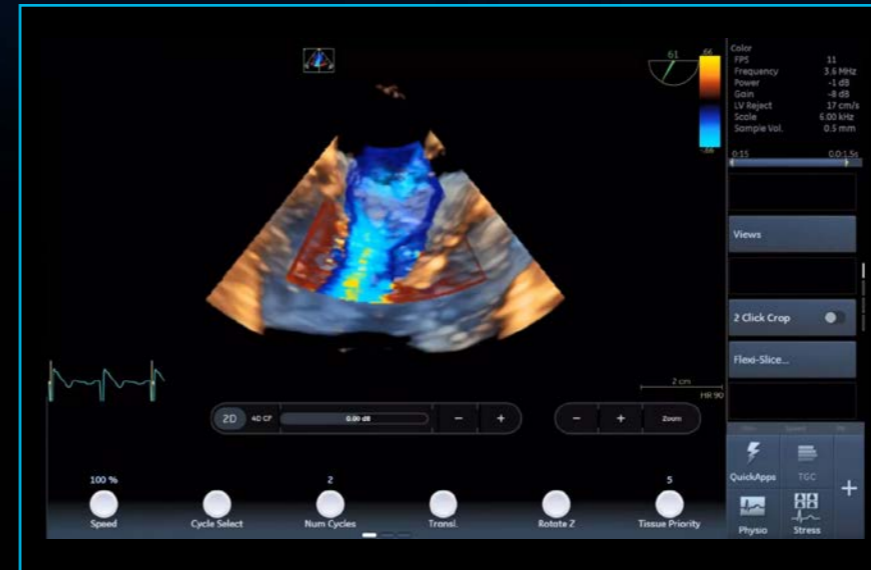
4D Markers

Make annotations that are viewable from all angles on 4D ultrasound volume data sets and their 2D views, facilitating communication in the echo lab, cath lab and OR.



View-X

See X-ray from fluoroscopy in real time right on your Vivid iq Ultra Edition screen as a picture in picture, facilitating communication between team members.



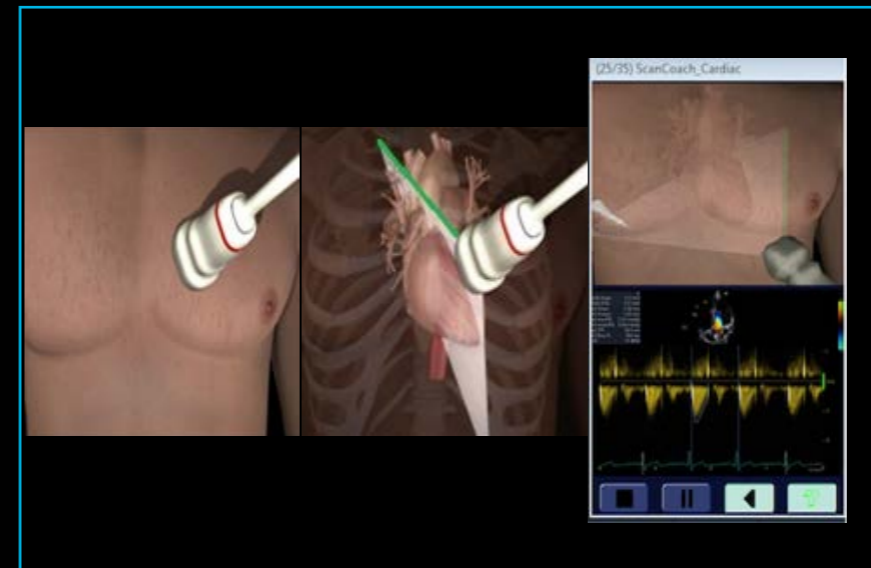
Ultra Edition

HD Color

4D color flow rendering technique for semi-transparent visualization of origin and size of high velocity jets.

Benefits:

- Enhance spatial relationships between flow and the surrounding structures
- Suppress non-diagnostic low flow information
- Work seamlessly with other visualization techniques such as 4D markers
- Supports 4D color flow data also from previous releases



Ultra Edition

Scan Coach

A reference and education tool that provides modules depicting basic scanning techniques with animated graphics of probe position, schematic of anatomy and reference clinical image.

Benefits:

Guided scanning:

- Conveniently located onboard the console within the Scan Assist Pro feature
- Provides guidance to obtain different views and measurements
- Helps inexperienced users performing echo scans

Education and reference tool:

- Assists in positioning the probe and probe orientation
- Anatomical reference helps visualize where the scan plane is located inside the heart
- Scan Assist Pro exam protocols can be customized per local guidelines and help ensure exam completeness

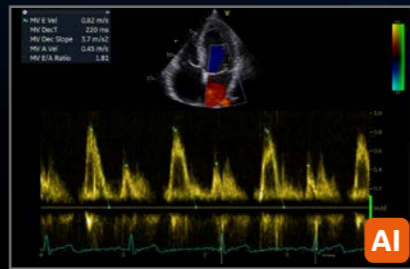


VIVID HEART APPLICATIONS

FLOW QUANTIFICATION

New in Ultra Edition

Your time is precious. Save it.

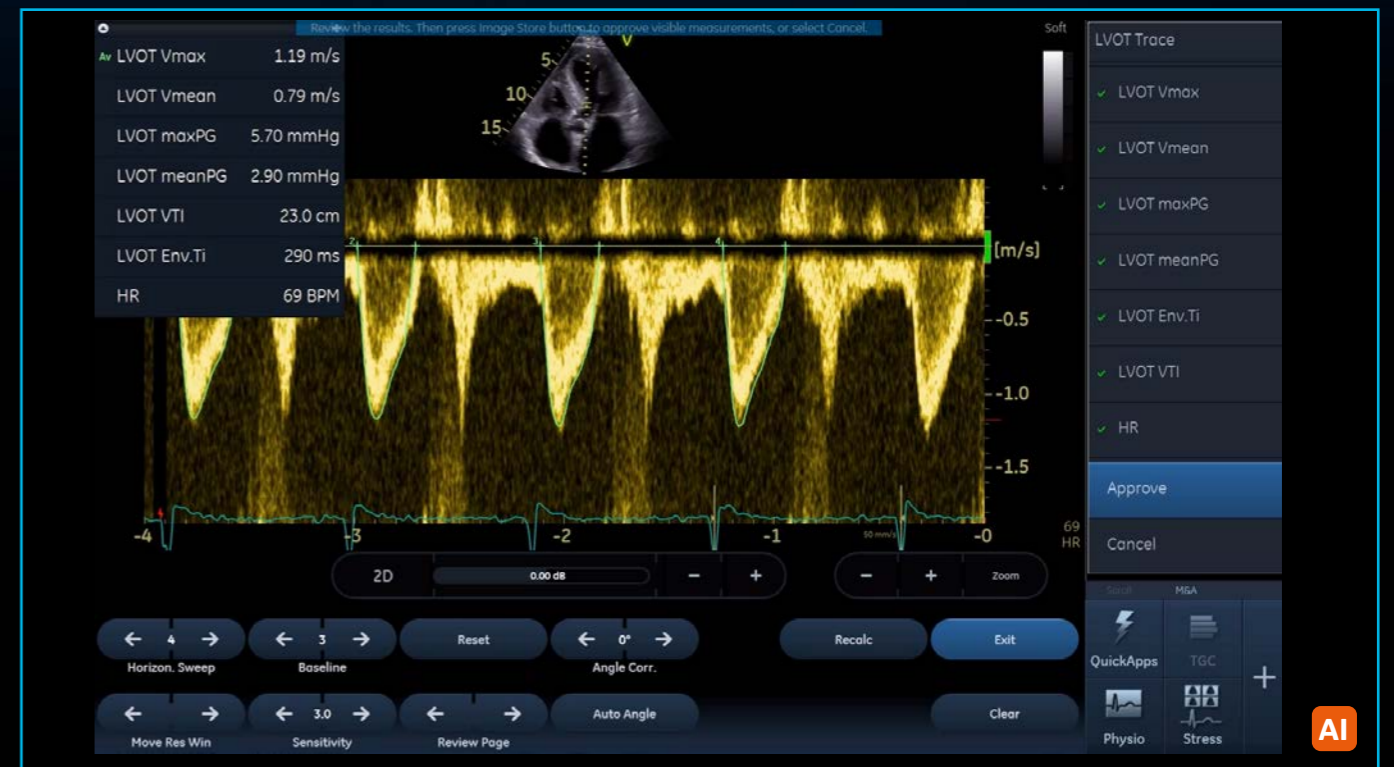


Cardiac Auto Doppler

Semi-automatic Cardiac Doppler measurements.

Benefits:

- Enhances reproducibility of follow-up studies when used in automated mode⁷
- Offers Doppler measurement in multiple cardiac cycles as recommended by guidelines for irregular heart rhythms^{8,9}
- Supports less experienced users with advanced automation



Ultra Edition

AI Auto Measure - Spectrum Recognition

Semi-automatic selection of appropriate spectral Doppler measurement tool.

Benefits:

- Enables fewer manual interactions by automatically opening the appropriate measurement tool⁶
- Works seamlessly with Cardiac Auto Doppler
- Enhances reproducibility of follow-up studies when used in automated mode⁶
- Supports less experienced users with advanced automation



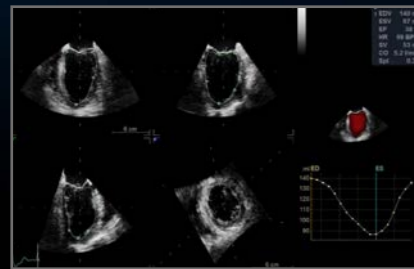


VIVID HEART APPLICATIONS

VALVES AND CHAMBERS QUANTIFICATION

Precision at the heart of quantification.

New in Ultra Edition



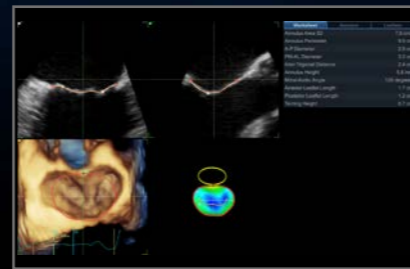
4D Auto LVQ

Adapted to work with full volume data sets acquired with the 4D TEE transducer, 4D Auto LVQ for TEE brings you a fast, easy, two-click method of placing points to define the initial endocardial border.



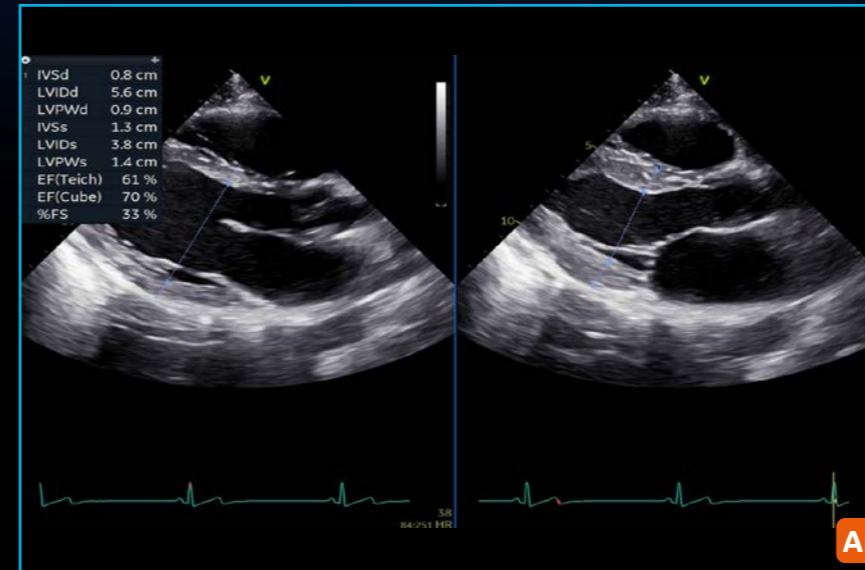
4D Auto AVQ

Automatically segment, align and quantify the aortic outflow tract – vital to device sizing and orientation for TAVI/ TAVR procedures.



4D Auto MVQ

Supporting TEE images, this integrated package helps visualize and quantify the mitral valve via a semi-automatic, surface-detecting algorithm.

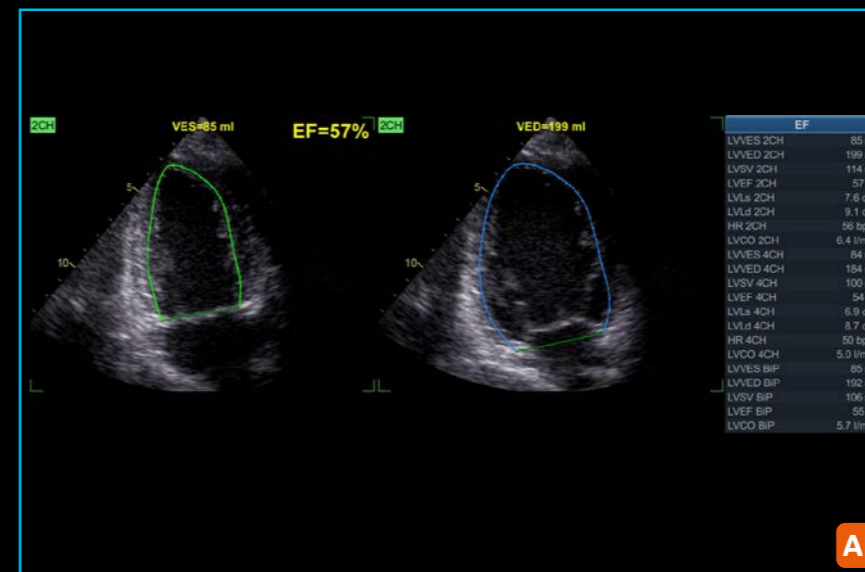


Ultra Edition AI Auto Measure 2D

Semi-automated LV dimension measurements (2D calipers) in the parasternal long axis view, reducing manual interactions.

Benefits:

- Achieves fast measurements of left ventricle dimensions:
 - Up to 80% less clicks⁶
 - No need to scroll to look for ED and ES frames
 - Reduce manual workflow during analysis of cardiac images
- Improves reliability and repeatability of measurements – potentially increasing reproducibility for follow-up studies



Ultra Edition Auto EF

Powered by AI-based View Recognition, Auto EF provides semi-automated quantification of left ventricular volumes and ejection fraction.

Benefits:

- Achieves fast measurements of ejection fraction
- DICOM® support. Assessment of the left ventricle ejection fraction also on data sets acquired on other vendors' systems

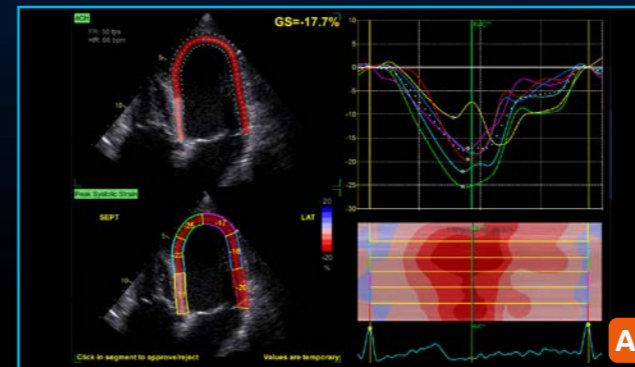


VIVID HEART APPLICATIONS

AFI FUNCTIONAL IMAGING

From diagnosis to prognosis.

New in Ultra Edition



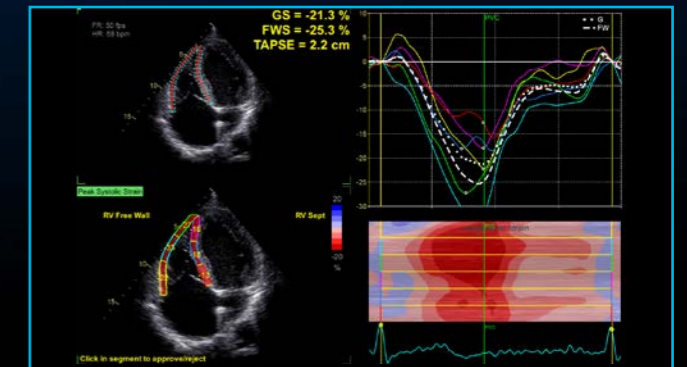
Ultra Edition

AFI LV with AI View Recognition*

Powered by AI-based View Recognition, AFI LV provides semi-automated quantification of left ventricular global and segmental strain.

Benefits:

- Offers advanced industry pioneered speckle tracking algorithm for quantifying myocardial deformation
- Works seamlessly - integrated ejection fraction calculation
- Supports Adult and Pediatric TTE and Adult TEE images
- Provides time savings via automatic selection of the appropriate 4-chamber, 2-chamber and APLAX images for analysis
- DICOM support. Assessment of the left ventricle ejection fraction also on data sets acquired on other vendors' systems



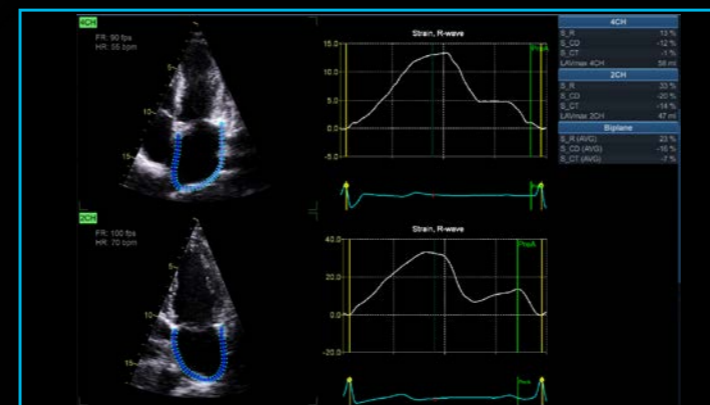
Ultra Edition

AFI RV

AFI RV is a novel tool to assess the right ventricular function by advanced speckle tracking echocardiography.

Benefits:

- Offers renown Vivid AFI user interface and workflow to allow current and new users easy adoption
- Supports right ventricle free wall strain, global strain and Tricuspid Annular Plane Systolic Excursion (TAPSE)
- Follows the 2018 EACVI-ASE Strain Standardized Task Force guidelines
- Supports right ventricle images also from previous releases



Ultra Edition

AFI LA

AFI LA Strain is a novel method to assess the left atrial function allowing global strain to be measured using speckle tracking echocardiography.

Benefits:

- Offers Vivid renown AFI user interface and workflow allowing users to easily adopt
- Supports left atrium strain, volumes and emptying fraction measurements
- Follows the 2018 EACVI-ASE Strain Standardized Task Force guidelines
- Supports left atrium images also from previous releases

*View Recognition is only applicable to images acquired with TTE probe on GE systems

SEAMLESS WORKFLOW INTEGRATION

POST PROCESSING & REVIEW

OPEN STANDARDS

INTEGRATION WITH YOUR WORKFLOW

EchoPAC Software Only and EchoPAC Plug-in:

- Analyze and review data from GE Healthcare Vivid family of scanners, as well as DICOM images from other ultrasound systems.
- Access all Vivid measurement and review tools utilizing GE Healthcare Raw Data or industry standard DICOM data
- DICOM Image transfer with optional GE Healthcare Raw Data transfers images easily in your existing workflow
- DICOM SR Measurement Transfer including standard and custom measurement allows seamless integration with GE Healthcare and other industry reporting systems and EMRs¹²

EchoPAC Plug-in is available for:

- GE Healthcare Centricity™ Cardio Enterprise with Intelligent Reporting (IR).
- GE Healthcare ViewPoint™ 6 with EchoPAC Suite¹¹
- As a plug-in to third party PACS

With Centricity Cardio Enterprise IR, routine adult echo reports are

83% complete before the physician opens the exam to review.¹⁰



SonoDefense

ADVANCED CYBERSECURITY
AND DATA PRIVACY PROTECTION

Healthcare institutions are under growing threats of cyberattacks – and the implications for data security, patient privacy, and the quality and cost of care are staggering.

Protecting against these threats and safeguarding your patients and your institution requires more than anti-virus protection. SonoDefense is GE Healthcare's multi-layer strategic approach to cybersecurity and patient data privacy for ultrasound.

SonoDefense is designed to:

- Keep the ultrasound machine safe and functional in the face of cyberthreats
- Protect patient data on the machine from unauthorized access
- Enable you to successfully implement patient data and security policies, while still managing product daily workflows



The SonoDefense strategy consists of **SIX LAYERS**, with each layer enhancing the overall security of the system and help protect patient data.

SonoDefense strategy applies to Vivid portfolio:

- Windows® 10 IoT Secure Operating System provides multi-layered security
- Application whitelisting prevents malware execution
- Configurable user security provides user authentication and access control
- Data encryption protects stored data and during transmission
- Network firewall disables unneeded operating system services
- Integrates with existing facility security infrastructure



Healthcare is a soft-target for hacking and ransomware.¹³

\$4B cost added in 2019¹⁴



Ultrasound is especially vulnerable to operator-dependence leading to

VARIABILITY between exams¹⁶



Constrained budgets increase pressure to

DO MORE with less¹⁵ and to optimize assets



Probe mishandling can lead to damage which can cause faulty data and may lead to incorrect medical decisions^{17, 18}



[POP] PERFORMANCE OPTIMIZATION PARTNERSHIPS

Purchasing a GE Healthcare ultrasound is not only getting access to a high-technology or remarkable clinical applications. It's about enjoying a new user experience, at every step of ownership. We help you to outperform today, while preparing your department for tomorrow's challenges.

STAFF EXCELLENCE

A comprehensive portfolio of training for clinical and technical users.

Helping you and your team build customized development plans to foster excellence and increased confidence.

ASSET OPTIMIZATION

Customizable dashboards for asset utilization and consulting services to provide actionable insights.

Achieving more with your assets to improve patient care and realize department strategic plans.

PROACTIVE MANAGEMENT

Use digital technology and tools to minimize expensive and disruptive unplanned downtime.

Proactive monitoring to help reduce cost and revenue loss from unplanned failures and automated updates for peace of mind.

IMPROVED UPTIME

Best-in-class repair services to drive uptime. Fully scalable from full coverage to shared maintenance.

Thoroughly aligned with your own in-house capabilities, providing the right balance between staff autonomy and our expertise.

DEVICE PROTECTION

Keep your device state-of-the-art with software upgrades, new applications and security patches.

Optimizing your device to drive clinical and operational benefits and help you stay ahead of the game, without changing your equipment.

PROBE PERFORMANCE

Customizable portfolio of solutions for probe lifecycle needs to improve availability and performance.

Proactive probe care that may help you increase diagnostic quality, decrease cross-contamination risk and expand the life span of the transducers.

PARTNERSHIPS DRIVE RESULTS

GE Healthcare is by your side to overcome these risks, helping you to:

- ✔ Keep your systems up and running, safe from breaches and cyberattacks
- ✔ Achieve more with your existing systems, without changing your investment plan
- ✔ Improve your activity, exam flow and staff planning, based on comprehensive data and reports
- ✔ Create comfort zone for your teams, reaching operational efficiency and clinical excellence
- ✔ Achieve high standard in probe-related cross-contamination and diagnostic errors

*Ready to make your Vivid **POP**?*

Complete lifecycle solution for clinical, operational & financial outcomes.

You take care of your patients, we'll take care of you.

UNLEASH THE POWER OF CONNECTED DEVICES

Your Vivid system has been designed to provide you with an optimal user experience. Connectivity is the key element to enjoy it fully, whenever and wherever you need it, regardless of site access restriction and planning constraints.

Discover a new world of services, included in every package:

REMOTE TECHNICAL SUPPORT

Access to experts anytime, anywhere

InSite™ connectivity enables OnDemand and real-time access to remote GE Healthcare experts

- Reduce disruptions
- Decrease system downtime
- Improve asset usage and staff productivity

It provides secure remote connectivity without requiring any open inbound ports or VPN connection.

PREDICTIVE MAINTENANCE

Know the failure before it occurs

Transform unplanned downtime into planned service events with **OnWatch** technology. It provides automated, 24/7 system monitoring, capable of detecting a system failure before it occurs. Any deviation alerts our GE Healthcare engineers, who proactively work to keep your operations running smoothly.

DATA DRIVEN INSIGHTS

All the insights you need to decide, at your fingertips

Better decisions start with better data **iCenter™** is a secure, cloud-based asset management tool that offers comprehensive data analytics for your systems. It provides insights to make informed decisions and helps improve operational performance, optimize patient flow and maintain compliance standards.

UpdateMe is a complementary app that gives you access to the data 24/7 directly on your smartphone. You can receive notifications and create a service request anytime, anywhere.

REMOTE FIX

UP TO 40%

issues fixed remotely with InSite¹⁹

COST SAVINGS

UP TO 90%

cost reduction, based on OnWatch alerts¹⁹

NEW REMOTE SUPPORT

Real-time and interactive applications support

Digital Expert²⁰ and **STAR** provide an interactive, real-time, flexible & convenient way to get education and support.

- May help improve training outcomes
- Increase capacity and efficiency
- Train staff on a short timeline



NEW AUTOMATED UPDATES





No need to worry about your system safety

Get automated software updates with **eDelivery** along with safety patches enabled by remote software download.

SonoDefense provides the highest level of cybersecurity to keep your systems up-to-date, with no impact on your operations. No on-site intervention needed.



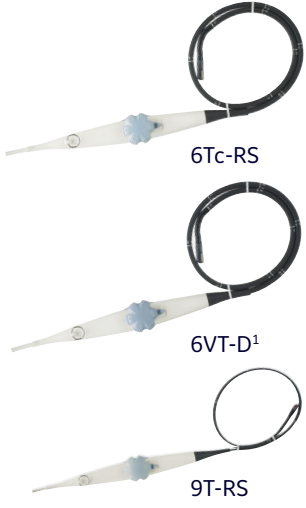


Cat #	Main Applications	Description	Footprint	Biopsy Guide	Scanner Frequency Range	Field of View	Depth of Field	
Sector								
 3Sc-RS	H45041DL	Cardiac, Pediatric, Abdominal, Fetal/Obstetrics, Adult Cephalic, Transcranial	Phased Array	18 x 24 mm	Multi-angle disposable, with a reusable bracket	1.3 - 4.0 MHz	120°	30 cm
 M5Sc-RS ¹	H44901AG	Cardiac, Pediatric, Abdominal, Fetal/Obstetrics, Transcranial, Adult Cephalic	XDclear™ Active Matrix Single Crystal Phased Array	18 x 27 mm	Multi-angle disposable, with a reusable bracket	1.5 - 4.6 MHz	120°	30 cm
 6S-RS	H45021RP	Pediatric, Neonatal Cephalic, Fetal/Obstetrics, Abdominal	Phased Array	17 x 24 mm		2.0 - 7.0 MHz	120°	30 cm
 12S-RS	H44901AB	Pediatric, Abdominal, Neonatal Cephalic	Phased Array	13 x 18 mm		4.2 - 12.0 MHz	90°	14 cm

¹Probe or Feature only available for Premium and 4D configurations









Cat #	Main Applications	Description	Footprint	Biopsy Guide	Scanner Frequency Range	Field of View	Depth of Field
Transesophageal							
H45551ZE	Cardiac, Transesophageal	TEE	12 x 14 mm with length of 45 mm		3.0 - 8.0 MHz	90°	30 cm
H45581BJ	Cardiac, Transesophageal	Active Matrix 4D Volume TEE	14 x 13 mm with length of 45 mm		3.0 - 8.0 MHz	90°	30 cm
H45531YM	Cardiac, Transesophageal	TEE	11 x 8 mm with length of 35 mm		3.6 - 10.0 MHz	90°	14 cm
Linear							
H40462LM	Small Organs, Peripheral Vascular, Pediatrics, Neonatal Cephalic, Abdominal, Musculoskeletal	Wide Band Linear Transducer with Active Matrix Array Technology	61 x 16 mm	Multi-angle, reusable bracket, disposable sleeve	5.0 - 15.0 MHz	50 mm	10 cm
H40442LL	Musculoskeletal, Small Organs, Peripheral Vascular, Abdominal, Pediatrics, Neonatal Cephalic	Linear Array	14 x 53 mm	Multi-angle, reusable bracket, disposable sleeve	2.0 - 10.0 MHz	44 mm	16 cm
H40402LY	Musculoskeletal, Small Organs, Peripheral Vascular, Abdominal, Pediatrics, Neonatal Cephalic	Linear Array	13 x 47 mm	Multi-angle and out-of-plane; reusable bracket, disposable sleeve	4.0 - 13.0 MHz	38 mm	12 cm



¹Probe or Feature only available for Premium and 4D configurations



Cat #	Main Applications	Description	Footprint	Biopsy Guide	Scanner Frequency Range	Field of View	Depth of Field
Convex							
 4C-RS ²	H4000SR	Abdominal, Pediatric, Fetal/Obstetrics, Musculoskeletal	Curved Array	18 x 66 mm	Multi-angle disposable, with a reusable bracket	1.5 - 5.0 MHz	58° 33 cm
 8C-RS	H40402LS	Cardiac, Abdominal, Pediatric, Transcranial, Neonatal Cephalic, Peripheral Vascular, Musculoskeletal, Small Organ	Curved Array	18 x 66 mm		3.5 - 10.0 MHz	131° 14 cm
 C1-5-RS ¹	H40462LA	Abdominal, Fetal/Obstetrics, Pediatrics, Musculoskeletal	Curved Array	17 x 69 mm	Multi-angle disposable, with a reusable bracket	1.5 - 5.0 MHz	70° 33 cm
Doppler							
 P2D	H45551CA	Cardiac	Pencil Probe	16 mm		1.9 - 2.1 MHz	
Special							
 E8Cs-RS	H48062AF	Fetal/Obstetrics, Transrectal, Transvaginal, Abdominal	Endo Curved Array	19 x 24 mm	Fixed-angle, disposable	3.5 - 10.0 MHz	168° 14 cm
Intraoperative							
 L8-18i-RS ¹	H40462LF	Peripheral Vascular, Small Organs, Musculoskeletal, Intraoperative	Linear IO Transducer	11 x 35 mm		4.5 - 18 MHz	25 mm 10 cm

¹ Probe or Feature only available for Premium and 4D configurations
² Probe or Feature not available for Premium and 4D configurations



Cat #	Main Applications	Description	Footprint	Biopsy Guide	Scanner Frequency Range	Field of View	Depth of Field
ICE							
H45021YE							
Catheter Cable for ICE							
+	Intracardiac and Intraluminal	Catheter	8 Fr diameter		4.2 - 11.5 MHz	90°	16 cm
AcuNav 8F [†]							
+	Intracardiac and Intraluminal	Catheter	10 Fr diameter		4.2 - 11.5 MHz	90°	16 cm
AcuNav 10F [†]							
+	Intracardiac and Intraluminal	Catheter	10 Fr diameter		4.2 - 11.5 MHz	90°	16 cm
SOUNDSTAR 3D 10F G [*]							
+	Intracardiac and Intraluminal	Catheter	10 Fr diameter		4.2 - 11.5 MHz	90°	16 cm
SOUNDSTAR eco 10F G [*]							
+	Intracardiac and Intraluminal	Catheter	8 Fr diameter		4.2 - 11.5 MHz	90°	16 cm
SOUNDSTAR eco 8F G [*]							

[†] Probe or Feature only available for Premium and 4D configurations

^{*} Distributed by Biosense Webster Inc.

^{*} Not available in all countries. Please contact Biosense Webster directly.



		Transducers								
		3Sc-RS	M5Sc-RS ¹	6S-RS	12S-RS	6Tc-RS	6VT-D ¹	9T-RS	9L-RS	12L-RS
Modes and Features	2D	■	■	■	■	■	■	■	■	■
	4D ⁵	■	■	■	■	■	■	■	■	■
	AdvQScan (Strain, SR, TSI) ^{1,3}	■	■	■	■	■	■	■	■	■
	AdvVascular (B-Flow, BFI) ⁴	■	■	■	■	■	■	■	■	■
	AFI ^{1,3}	■	■	■	■	■	■	■	■	■
	AMM	■	■	■	■	■	■	■	■	■
	Angio ⁴	■	■	■	■	■	■	■	■	■
	Auto2DEF ³	■	■	■	■	■	■	■	■	■
	AFI RV	■	■	■	■	■	■	■	■	■
	AFI LA	■	■	■	■	■	■	■	■	■
	AI Auto Measure - 2D	■	■	■	■	■	■	■	■	■
	AI Auto Measure - Spectrum Recognition	■	■	■	■	■	■	■	■	■
	Biplane or Triplane ¹	■	■	■	■	■	■	■	■	■
	Color	■	■	■	■	■	■	■	■	■
	Curved AMM ¹	■	■	■	■	■	■	■	■	■
	CW Doppler	■	■	■	■	■	■	■	■	■
	Smart Stress ³	■	■	■	■	■	■	■	■	■
	Harmonics	■	■	■	■	■	■	■	■	■
	IMT	■	■	■	■	■	■	■	■	■
	LOGIQ View ¹	■	■	■	■	■	■	■	■	■
	LVO Contrast ^{1,3}	■	■	■	■	■	■	■	■	■
	M-Mode	■	■	■	■	■	■	■	■	■
	PW Doppler	■	■	■	■	■	■	■	■	■
	Q Analysis	■	■	■	■	■	■	■	■	■
	Rodent	■	■	■	■	■	■	■	■	■
	Tissue Tracking ³	■	■	■	■	■	■	■	■	■
	TVI ²	■	■	■	■	■	■	■	■	■
	Virtual Apex	■	■	■	■	■	■	■	■	■
Virtual Convex	■	■	■	■	■	■	■	■	■	

- Supported on this probe
- Not supported on this probe

¹ Probe or Feature only available for Premium and 4D configurations
² Probe or Feature not available for Premium and 4D configurations
³ Only for cardiac applications/presets
⁴ Only for non-cardiac applications/presets
⁵ Probe or Feature only available for 4D configuration



		Transducers							
		ML6-15-RS ¹	L8-18i-RS ¹	4C-RS ²	C1-5-RS ¹	8C-RS	E8Cs-RS	P2D	ICE*
Modes and Features	2D	■	■	■	■	■	■	■	■
	4D ⁴	■	■	■	■	■	■	■	■
	AdvQScan (Strain, SR, TSI) ^{1,3}	■	■	■	■	■	■	■	■
	AdvVascular(B-Flow, BFI) ⁴	■	■	■	■	■	■	■	■
	AFI ^{1,3}	■	■	■	■	■	■	■	■
	AMM	■	■	■	■	■	■	■	■
	Angio ⁴	■	■	■	■	■	■	■	■
	Auto2DEF ³	■	■	■	■	■	■	■	■
	AFI RV	■	■	■	■	■	■	■	■
	AFI LA	■	■	■	■	■	■	■	■
	AI Auto Measure - 2D	■	■	■	■	■	■	■	■
	AI Auto Measure - Spectrum Recognition	■	■	■	■	■	■	■	■
	Biplane or Triplane ¹	■	■	■	■	■	■	■	■
	Color	■	■	■	■	■	■	■	■
	Curved AMM ¹	■	■	■	■	■	■	■	■
	CW Doppler	■	■	■	■	■	■	■	■
	Smart Stress ³	■	■	■	■	■	■	■	■
	Harmonics	■	■	■	■	■	■	■	■
	IMT	■	■	■	■	■	■	■	■
	LOGIQ View ¹	■	■	■	■	■	■	■	■
	LVO Contrast ^{1,3}	■	■	■	■	■	■	■	■
	M-Mode	■	■	■	■	■	■	■	■
	PW Doppler	■	■	■	■	■	■	■	■
	Q Analysis	■	■	■	■	■	■	■	■
	Rodent	■	■	■	■	■	■	■	■
	Tissue Tracking ³	■	■	■	■	■	■	■	■
	TVI ³	■	■	■	■	■	■	■	■
	Virtual Apex	■	■	■	■	■	■	■	■
Virtual Convex	■	■	■	■	■	■	■	■	

■ Supported on this probe
 □ Not supported on this probe

¹ Probe or Feature only available for Premium and 4D configurations
² Probe or Feature not available for Premium and 4D configurations
³ Only for cardiac applications/presets
⁴ Only for non-cardiac applications/presets
⁵ Probe or Feature only available for 4D configuration
 * Not available in all countries. Please contact Biosense Webster directly.