



# NextGen LOGIQ™ e Ultrasound System Made for Your Point of Care

*Simple. Fast. Precise.*



# Challenges in Point of Care

Point of care ultrasound physicians asked for a system equipped with immediate action workflow, bright-room operation and precise guidance, and the LOGIQ *e* was designed to meet these needs and more.

## Designed for Your Point of Care

**See clearly. See quickly. Guide precisely. Those were the values users requested that drove the creation of the NextGen LOGIQ *e*.** Its imaging engine comes from GE's flagship console systems, delivering crisp images in a compact package. Point-of-care-specific software and transducers help you see the needle to administer a block or perform an aspiration quickly. The system includes innovative features to help simplify point of care procedures and enhanced cybersecurity measures from the Windows® 10 operating platform.

## Simple

The LOGIQ *e*'s specialized software and transducers help you keep up with treatment advances and simplify interventions. Terrific, right-out-of-the-box imaging – optimized for Point of Care – makes the technology transparent so that you can focus on the patient.

- **The simplicity of a number.** Color quantification provides a numeric representation of the blood flow, which may be associated with inflammation, tumors, and synovitis.
- **Simple consistency.** Patient Follow-up Tool with Fusion helps ensure technical consistency from exam-to-exam to help clinical conclusions not be clouded by inconsistent technique.
- **Simple documentation.** One click sends images to multiple storage locations.

## Fast

Whether time is of the essence or you're measuring productivity for business reasons, the LOGIQ *e* was built to help make you fast. The highly portable system easily moves from patient to patient.

- **Need a third hand?** With a needle in one hand and a probe in the other, sometimes you need another person to adjust the image. With system controls on the probe handle, now you may not need the extra hand.
- **Imaging on the go.** Compact and battery-operated, the LOGIQ *e* allows flexibility in moving from patient-to-patient. With a laptop that detaches from the cart, go from cart to table with ease.
- **Focus on the patient.** Anatomy-specific presets and the ability to display only the functions you need means you can focus on the patient rather than the control panel.
- **Sanitize with ease.** Built with an adhesive keyboard cover to protect from spills, sprays and drops, sanitize your machine and be ready for your next patient.



ML6-15

## Precise

Diagnostic or guidance, image quality matters. Crisp imaging is at the core of the LOGIQ *e*.

- **Tissue differentiation matters.** The LOGIQ *e* imaging engine is separately optimized for each point-of-care application.
- **See the needle.** The LOGIQ *e* uses two different types of ultrasound: One for tissue and one for metal. This helps the needle stand out and allows separate control of the needle appearance.
- **Image almost the whole body... and almost any body.** The 1-5 MHz curved transducer provides penetration for deep structures, no matter the body type. Other transducers image up to 22 MHz for stunning superficial detail.
- **See the inflammation and early disease.** High-Res PDI is a GE exclusive technology to visualize flow in neovascularization.
- **See in 3D.** Use any transducer<sup>1</sup> to show anatomical relationships intuitively with Easy3D.
- **Increased resolution you need.** The ML6-15 matrix technology transducer helps you visualize with precision.



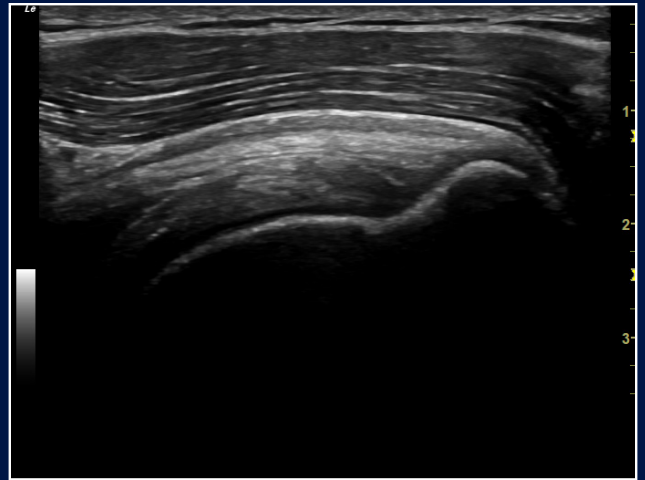
<sup>1</sup> "Any transducer" applies to all transducers that have been validated on the NextGen LOGIQ *e*.



Attention to detail with crisp images



Portable docking cart



Excellent tissue differentiation of the Supraspinatus tendon and surrounding anatomy using the ML6-15



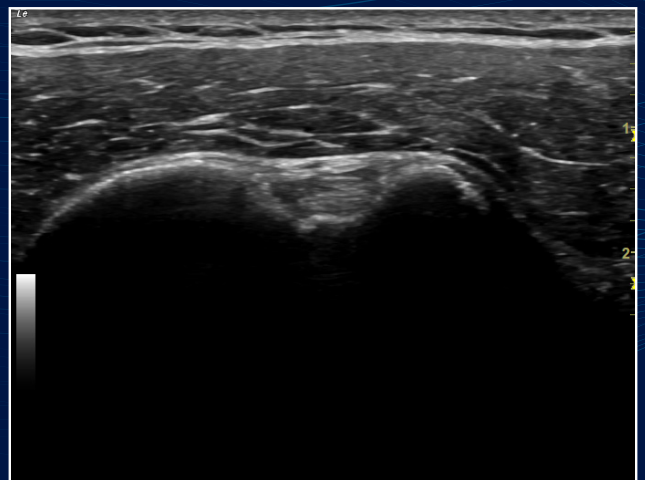
Wide range of transducers



Outstanding contrast resolution of the Achilles Tendon using the ML6-15

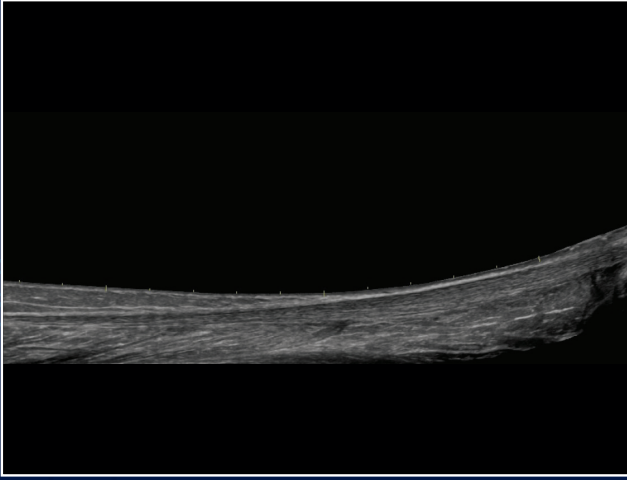


Keyboard cover

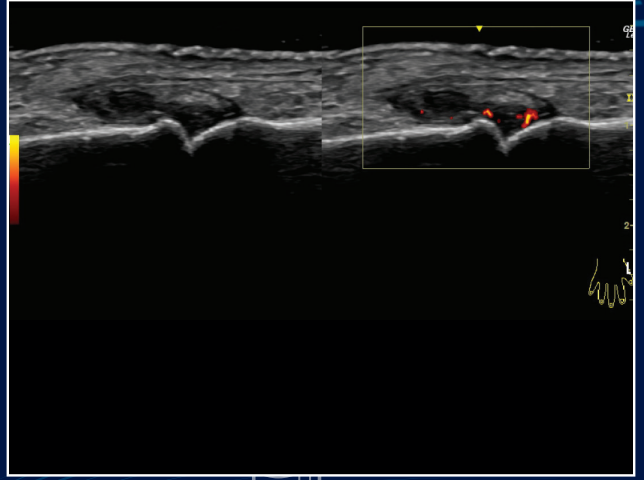


Remarkable visualization of the Biceps tendon between the lesser and greater tuberosity.

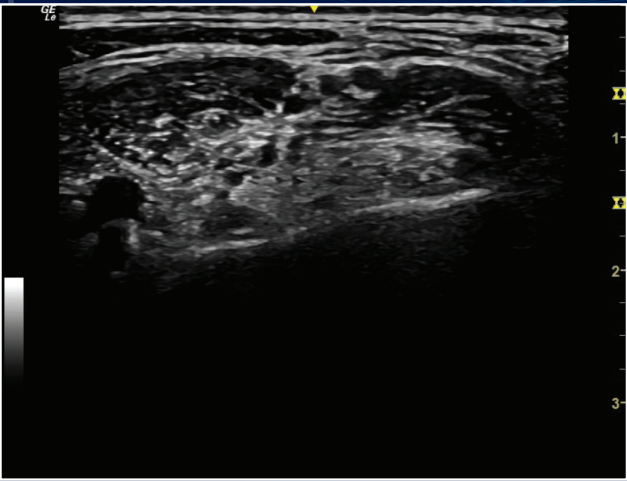




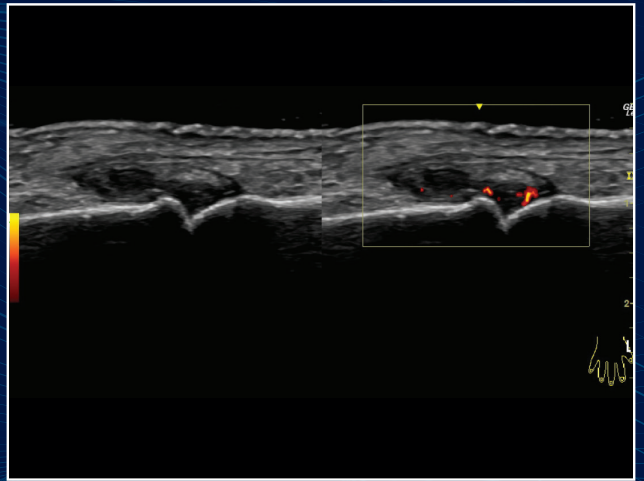
Exceptional detail in the length of the achilles tendon is routinely seen using the LOGIQ View with the L4-12t-RS



Axial resolution of the High-Res PDI neovascularization is remarkable using the L4-12t-RS



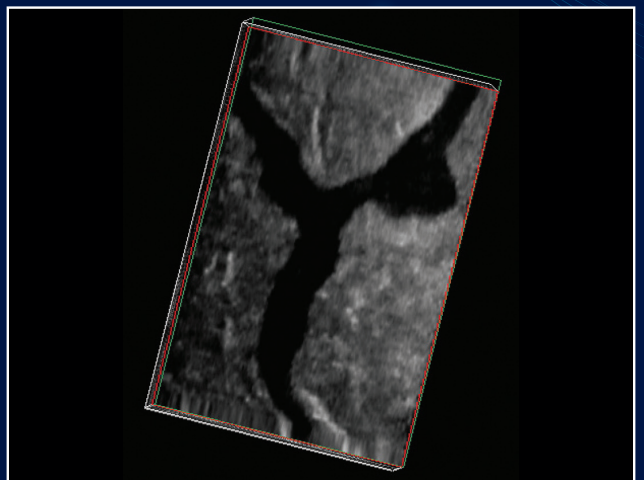
Brachial plexus nerves at the interscalene level are clearly delineated between the scalene muscles while utilizing the 12L-RS



Comparison of B-mode with PDI of an anatomical area using the L4-12t-RS is possible with split screen

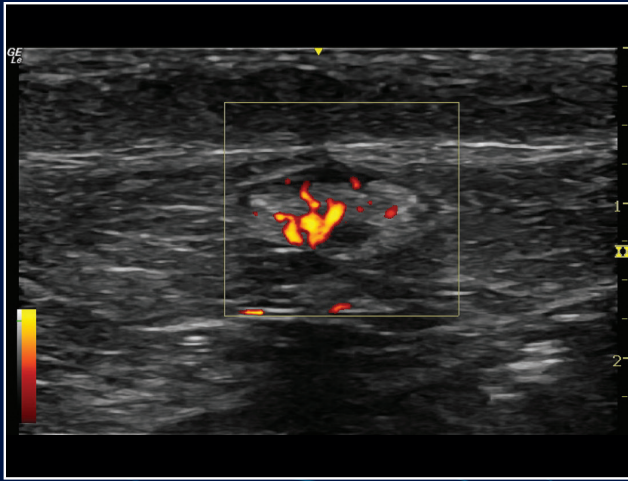


Excellent contrast resolution is identified scanning the heart using the 3Sc-RS

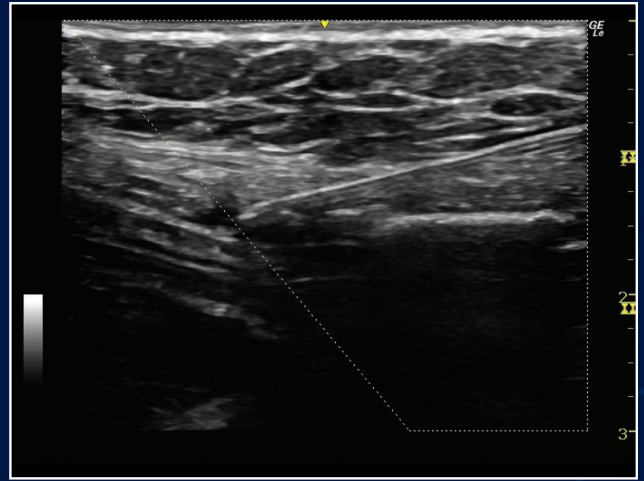


Ability to see the varicose vein in multiple dimensions is easily achievable using 3D and 12L-RS

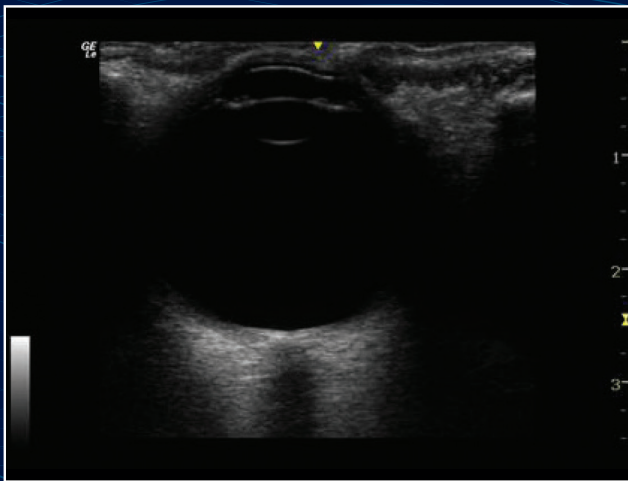




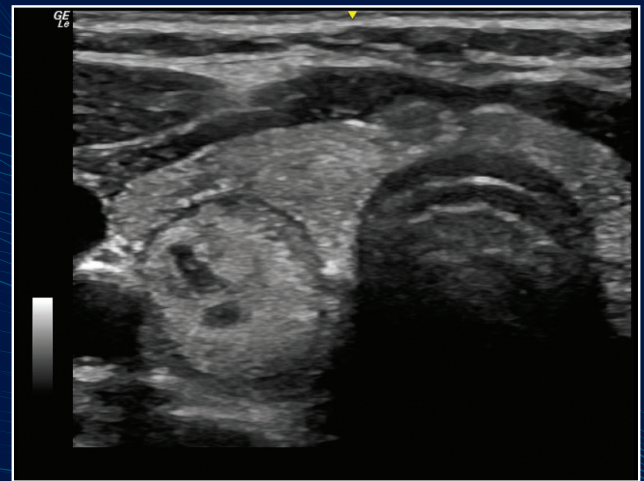
Outstanding visualization of the lymph node PDI vascularization is significant using the 12L-RS



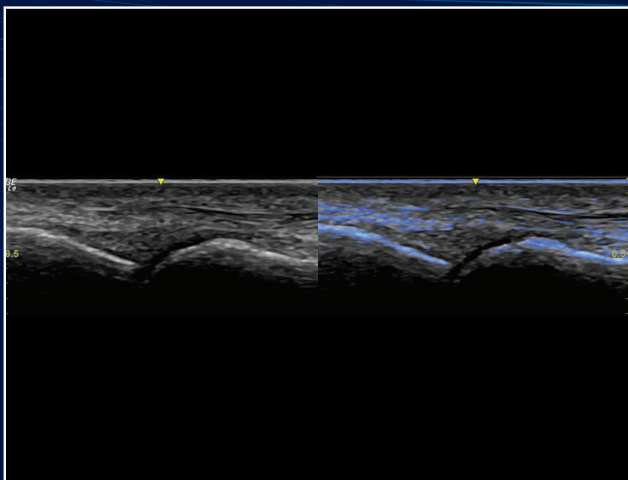
Needle and needle tip are clearly demonstrated approaching the transverse abdominus muscle for TAP block procedure



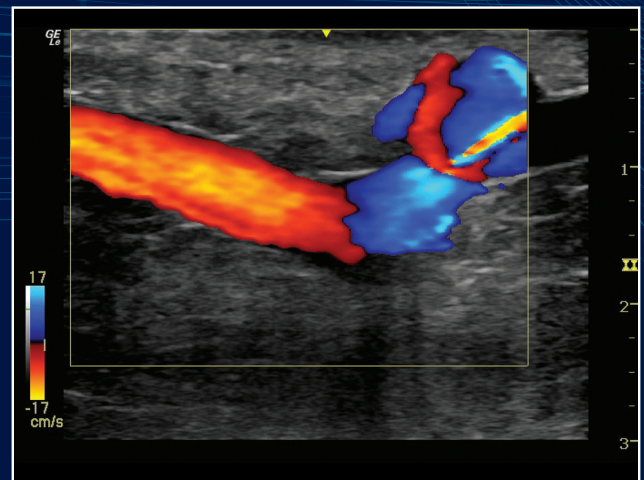
Visualization of the optic nerve sheath is well delineated utilizing the 12L-RS



Remarkable tissue differentiation of a thyroid nodule and surrounding anatomy is seen using the L4-12t-RS



Accurate comparison in musculoskeletal imaging has been taken to the next level with the addition of Fusion to the daily workflow



Directional venous flow is easily confirmed while applying color Doppler utilizing the L4-12t-RS

# About GE Healthcare

GE Healthcare is the \$18 billion healthcare business of GE (NYSE: GE). As a leading global medical technology and digital solutions innovator, GE Healthcare enables clinicians to make faster, more informed decisions through intelligent devices, data analytics, applications and services, supported by its Edison intelligence platform. With over 100 years of healthcare industry experience and around 50,000 employees globally, the company operates at the center of an ecosystem working toward precision health, digitizing healthcare, helping drive productivity and improve outcomes for patients, providers, health systems and researchers around the world.

Follow us on Facebook, LinkedIn, Twitter, and Insights for the latest news, or visit our website [www.gehealthcare.com](http://www.gehealthcare.com) for more information.



©2021 GE All rights reserved.

GE, GE Monogram and LOGIQ are trademarks of GE.

Not all features or specifications described in this document may be available in all probes and/or modes.

All probes names include the -RS in the name to identify the connector.

GE Medical Systems Ultrasound & Primary Care Diagnostics, LLC, a General Electric Company, doing business as GE Healthcare.

NextGen LOGIQ *e* is a configuration of LOGIQ *e*.

Reproduction in any form is forbidden without prior written permission from GE. Nothing in this material should be used to diagnose or treat any disease or condition. Readers must consult a healthcare professional.

July 2021 JB16555XX



# NextGen LOGIQ™ e Ultrasound System Made for Anesthesia

*Simple. Fast. Precise.*



# Challenges in Anesthesiology

We know from experts around the world that a successful block requires seeing the nerve in detail with accurate needle guidance. Anesthesiologists also typically need help seeing the needle tip, to be confident that an injection was administered in the correct location regardless of body type and the ability to perform procedures quickly.

## Designed for Anesthesiology

**See clearly. See quickly. Guide precisely. Those were the values that anesthesiologists requested that drove the creation of the NextGen LOGIQ *e*.** With enhanced cybersecurity measures from the Windows® 10 operating platform, its imaging engine comes from GE's flagship console system, delivering crisp images in a compact and portable package. Innovative, anesthesia-specific software and transducers help you see the needle and administer a block, even in a brightly lit room.

## Simple

The LOGIQ *e* is optimized for anesthesia and gives you many advanced features. Its right-out-of-the-box imaging helps make the technology transparent so that you can focus on the patient.

- **Set up for you.** Head to toe, every block is different. Anatomy-specific presets and the ability to display only the functions you need means you can focus on the patient rather than the control panel.
- **Workhorse simplicity.** The versatility of probes like the L4-12t and ML6-15 mean you can use a single probe for many applications.
- **Simple documentation.** One click sends images to multiple storage locations.
- **Simple consistency.** Ensure technical consistency from exam-to-exam and ensure clinical conclusions are not clouded by inconsistent technique.

## Fast

Whether time is important in your clinical environment, or you're measuring productivity for business reasons, the LOGIQ *e* is built to help make you fast. The compact system quickly moves from patient to patient.

- **Need a third hand?** With a needle in one hand and a probe in the other, sometimes you need another person to adjust the image. With system controls on the L4-12t probe, you can have better control of your system.
- **Imaging on the go.** Compact and battery-operated, the LOGIQ *e* allows flexibility in moving from patient-to-patient. With a laptop that detaches from the cart, go from cart to table with ease.



## Precise

Getting the needle in the right place the first time on all patient types is key to patient comfort. Crisp imaging is at the core of the LOGIQ *e*.

- **See the needle.** The LOGIQ *e* uses two different types of ultrasound: One for tissue and one for metal. This makes the needle stand out and allows separate control of its appearance.
- **See the nerve.** Tissue differentiation matters. The LOGIQ *e*'s imaging engine is optimized to help make the nerve clearly visible.







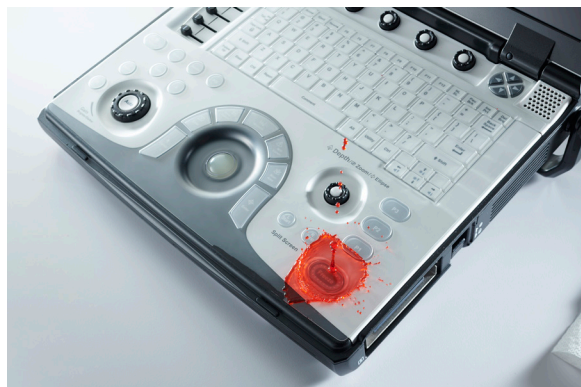
# Attention to detail with crisp images



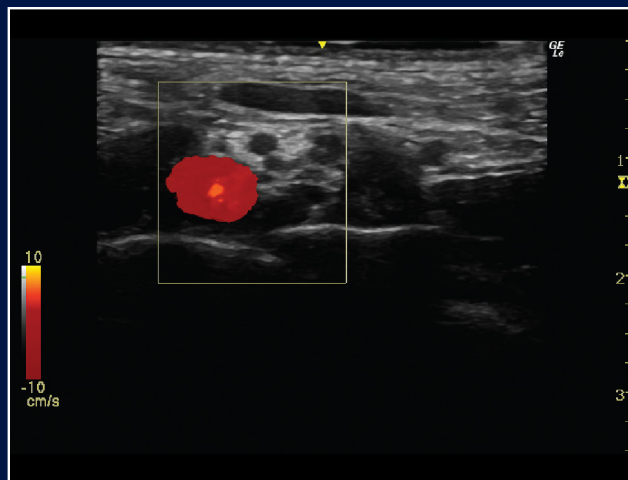
Portable docking cart



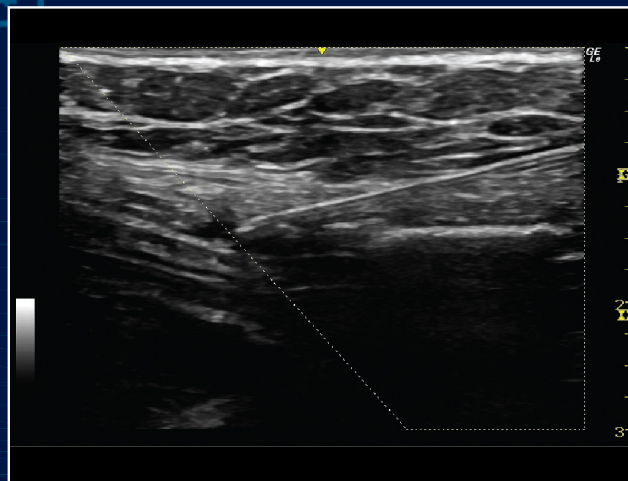
Wide range of transducers



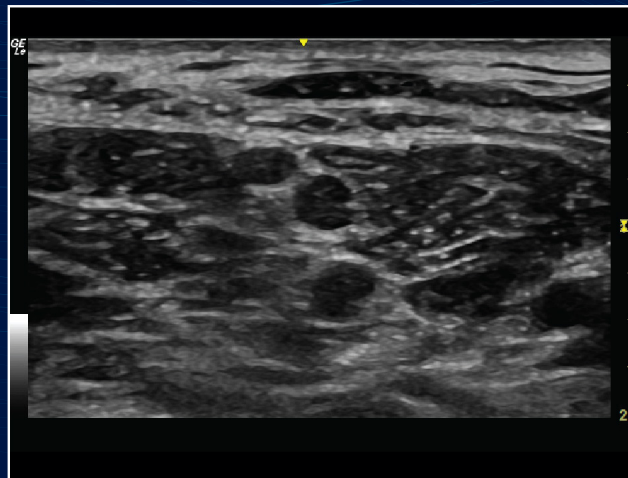
Keyboard cover



The supraclavicular brachial plexus nerve is easily confirmed while applying power Doppler with the L4-12t-RS

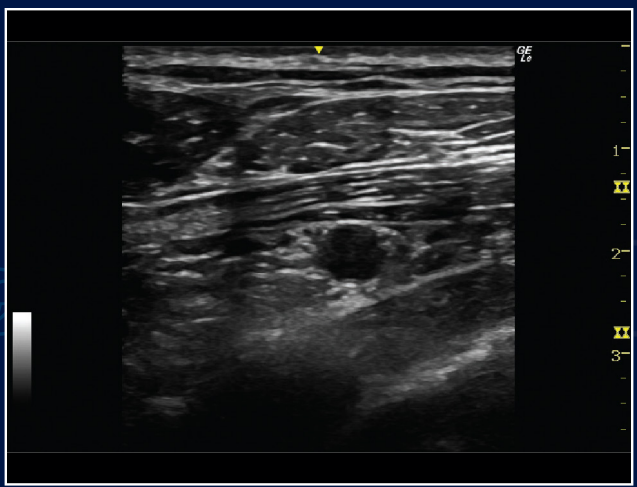


Needle and needle tip are clearly demonstrated approaching the transverse abdominus muscle for TAP block procedure

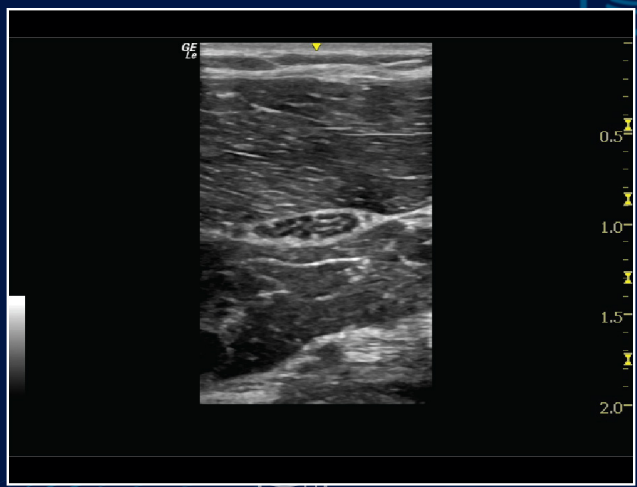


Brachial plexus nerve is clearly visualized between the scalene muscles using the L4-12t-RS

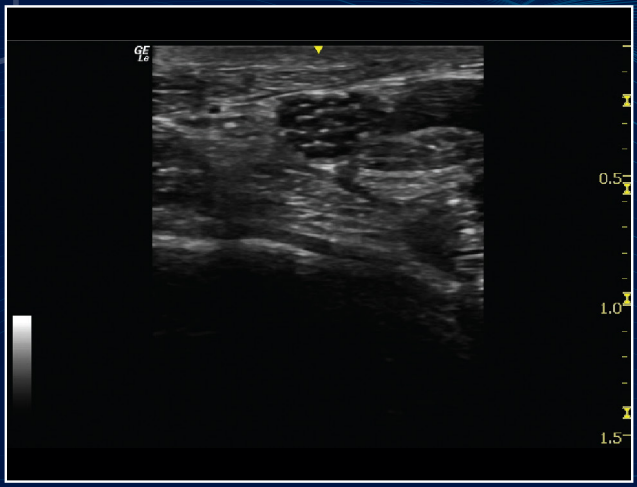




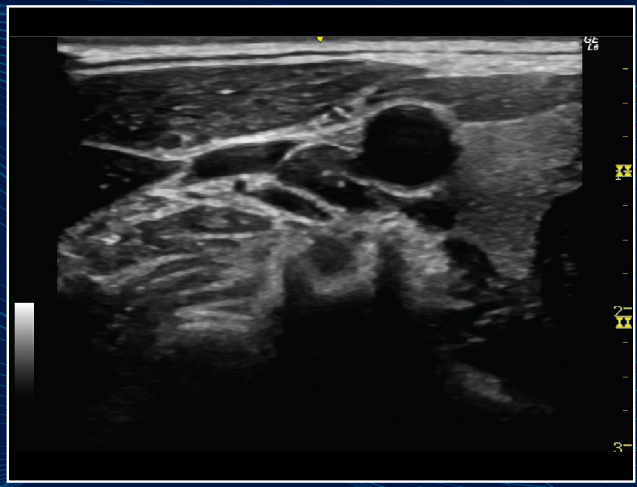
Infraclavicular brachial plexus is well seen surrounding the axillary artery between the two fascial planes imaged on the L4-12t-RS



Clarity of the median nerve at the mid-forearm shows excellent spatial resolution using the L10-22-RS



Clearly delineate the individual fascials of nerve bundles using the high resolution of the L10-22-RS



Visualization of the phrenic nerve is clearly defined using the L4-12t-RS



# About GE Healthcare

GE Healthcare is the \$18 billion healthcare business of GE (NYSE: GE). As a leading global medical technology and digital solutions innovator, GE Healthcare enables clinicians to make faster, more informed decisions through intelligent devices, data analytics, applications and services, supported by its Edison intelligence platform. With over 100 years of healthcare industry experience and around 50,000 employees globally, the company operates at the center of an ecosystem working toward precision health, digitizing healthcare, helping drive productivity and improve outcomes for patients, providers, health systems and researchers around the world.

Follow us on Facebook, LinkedIn, Twitter, and Insights for the latest news, or visit our website [www.gehealthcare.com](http://www.gehealthcare.com) for more information.



©2021 GE All rights reserved.

GE, GE Monogram and LOGIQ are trademarks of GE.

Not all features or specifications described in this document may be available in all probes and/or modes.

All probes names include the -RS in the name to identify the connector.

GE Medical Systems Ultrasound & Primary Care Diagnostics, LLC, a General Electric Company, doing business as GE Healthcare.

NextGen LOGIQ *e* is a configuration of LOGIQ *e*.

Reproduction in any form is forbidden without prior written permission from GE. Nothing in this material should be used to diagnose or treat any disease or condition. Readers must consult a healthcare professional.

July 2021 JB16553XX